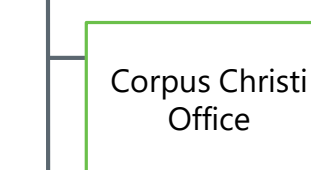
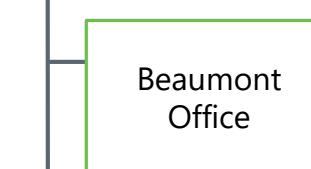
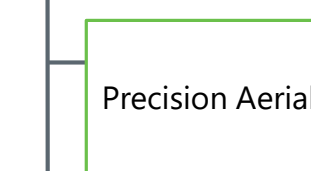
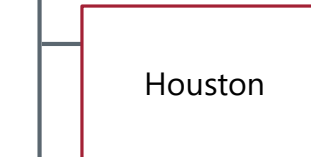
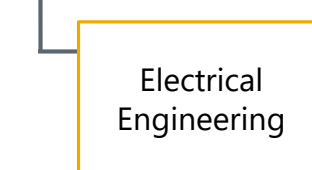
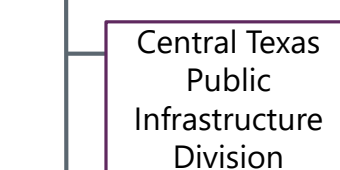
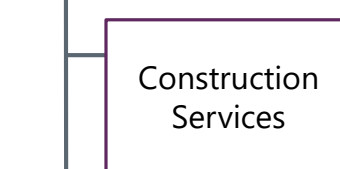
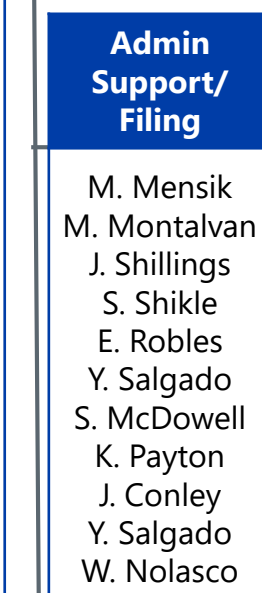
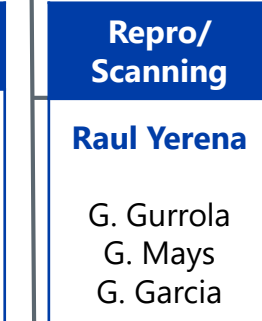
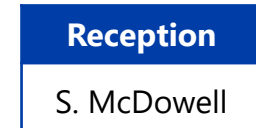
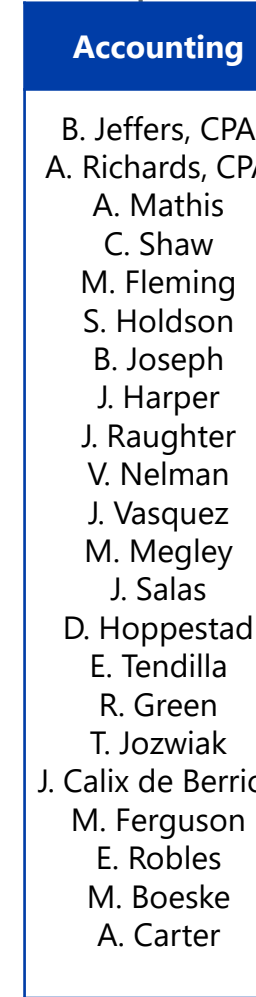
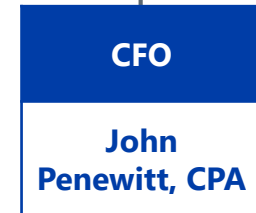
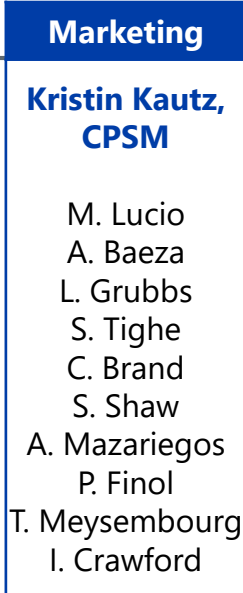
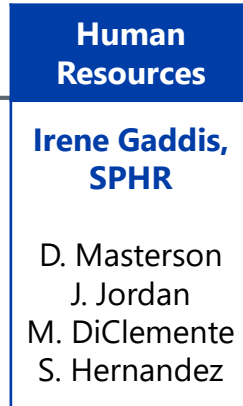
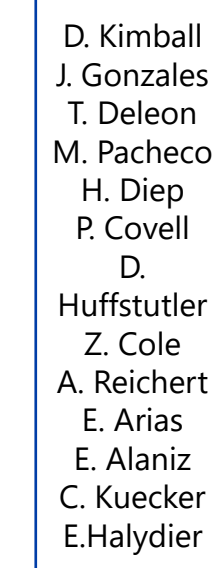
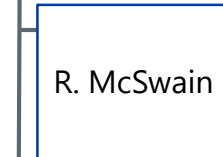
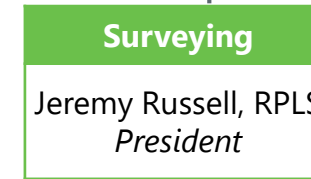
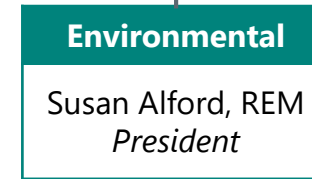
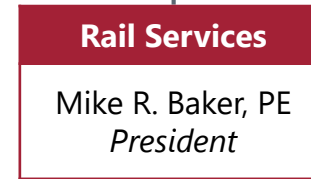
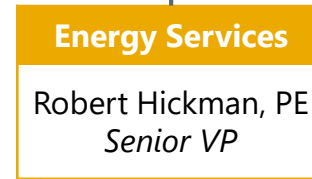
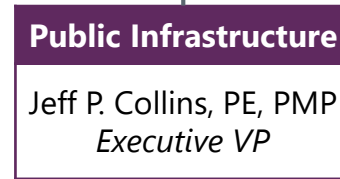
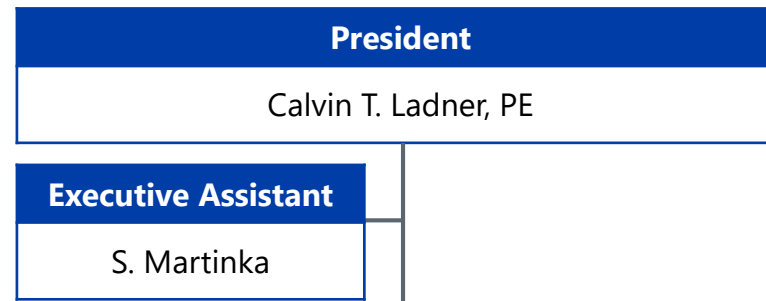




LJA STAFF ORGANIZATION



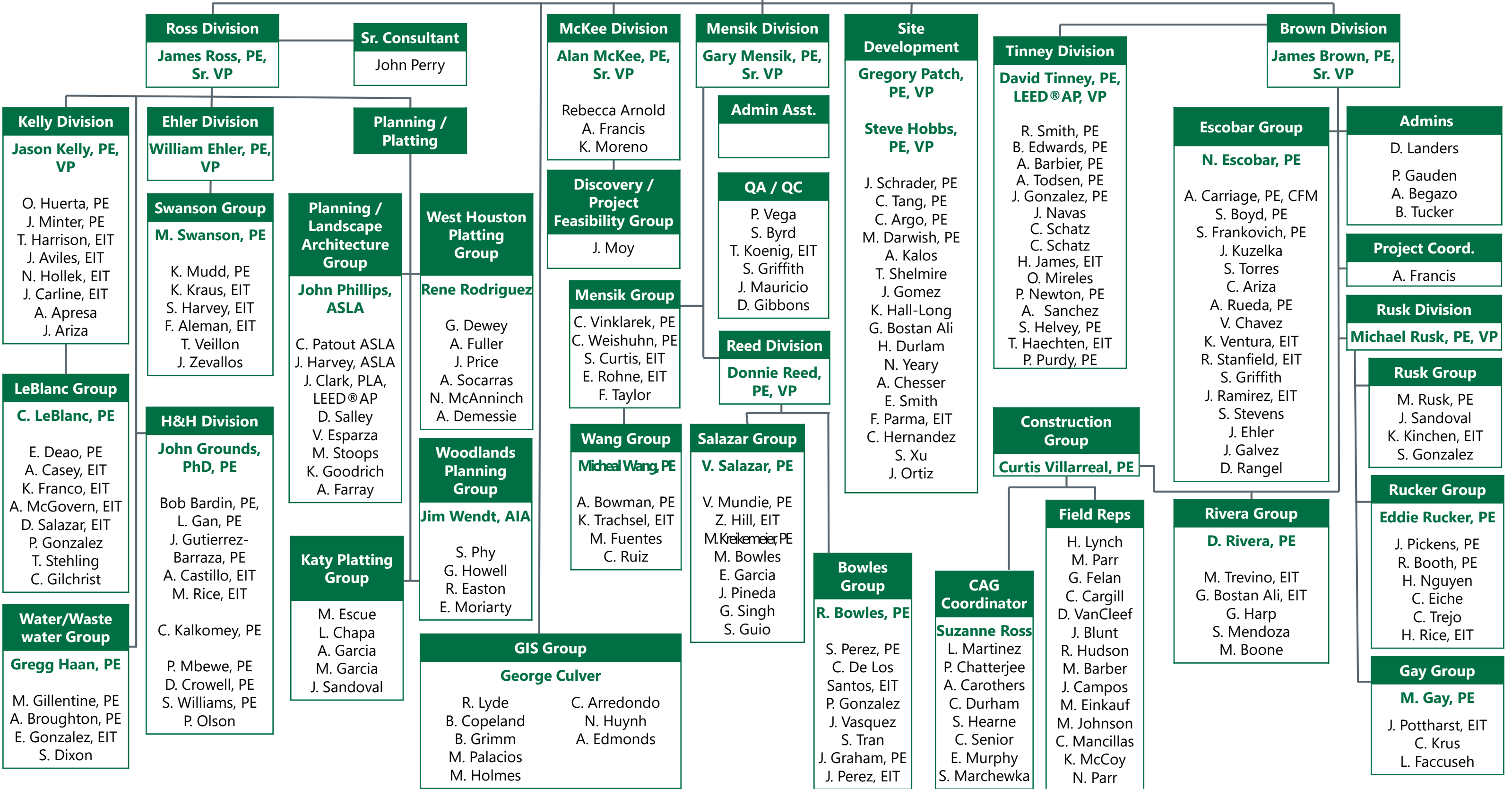


HOUSTON LAND DEVELOPMENT STAFF ORGANIZATION

James Ross, PE, Sr. VP

Administrative Coordinator

E. McAllister





CENTRAL TEXAS LAND DEVELOPMENT STAFF ORGANIZATION

John Clark, PE, Sr. VP

Austin Division

John Clark, PE, Sr. VP

Austin Group

D. Miller, PE, VP
D. Ryan, PE, VP
P. Viktorin, PE
B. Faltsek, PE
R. Hurley, PE
M. Provaznik, PE
L. Crone, PE
H. Reimer, PE
C. Hager
J. Carter
C. Stedman
T. Sykes
J. Reyes
J. Samerigo
S. Crandon
A. Kuhr
L. Worsham
J. Kutac
E. Petersen
J. Rollins
K. Quick, EIT
R. Medina
C. Herrera
R. Kotera
Warren Welch
J. Millan, Sr PE

Westlake Group

D. Wight, PE
W. Hoysa, PE
D. Hoppestad
J. Midura, PE
J. Camarillo
P. Poel
J. Bradford
N. Anderson
V. Edwards
J. Piecuch
M. Lowden
S. Echeverria
R. Bentley
A. Kinsella
E. Lopez
W. Caller
R. Poplaswki
M. Debs
J. Garza
Brighton Yau, EIT

Westlake Division

Joseph Longaro, PE, Sr. VP
Administrative Coordinator
E. Wong

San Antonio Division

B. Baggs, PE
P. Flores, PE
E. Rodriguez
P. Martinez
B. Boentges
S. MacFarland
E. Garza
M. Santos
S. Vu



NORTH TEXAS LAND DEVELOPMENT

Jim Wiegert, PE, Sr. VP / Kyle Salzman, PE, VP





PUBLIC INFRASTRUCTURE STAFF ORGANIZATION

Jeff P. Collins, PE, PMP, Executive VP

Administrative Coordinator

R. Puente

Transportation Division

Dan Copps, PE, Sr. VP

Construction Services

R. Kronenberger, PE
L. Gamboa, PE
A. Lujan, PE
J. Salinas, PE
C. Brook
E. Arzia
J. Arriaga
K. Mackan, EIT
B. Wilson
R. Seals
W. Wilson
S. Eathalapaka
V. Pena, PE
A. Karr

Central Texas Public Infrastructure Division

Ken Schrock, PE, VP

Public Works Division

Jeff Cannon, PE, VP

Project Development

Todd Thurber, PE, VP
Chris Cotter, PE, VP

Dallas Office

D. Tounget, PE

Administrative Asst.

Patty Alvarez

Tounget Group

D. Tounget PE

A. Borgan PE
A. Coronado EIT
E. Veloz
E. Garza
J. Santillan

Technology Group

Suzanne Wright

Contracts

Rebecca Puente

CADD Manager

Phillip Westerman

Coyle Group

M. Coyle, PE

K. Tooley
J. Hilscher

QA/QC

D. Garrett, PE
C. Moczygemba
J. Teets

Public Works

J. Boyle

Transportation

K. Schrock, PE

Schrock Group

K. Schrock, PE, VP

Z. Ryan, PE, CFM
S. Williams, PE
D. Bohls, PE, CFM
R. Sladek, PE
M. DeLaCruz
K. Rogers
M. Hernandez
A. Quezada
M. Hourani
J. Pine
D. Fuller
S. Bond

Young Group

B. Young, PE

P. Ternes, EIT
B. Ratcliff, EIT
A. McCarthy
R. Miller
S. Adams, EIT
J. Boyle
B. Kilgore
P. Nevejas
R. Salinas
R. San Miguel
L. Veldanez
R. Muenster
B. Gurley
M. Dauenhauer

Right of Way and Real Estate Services

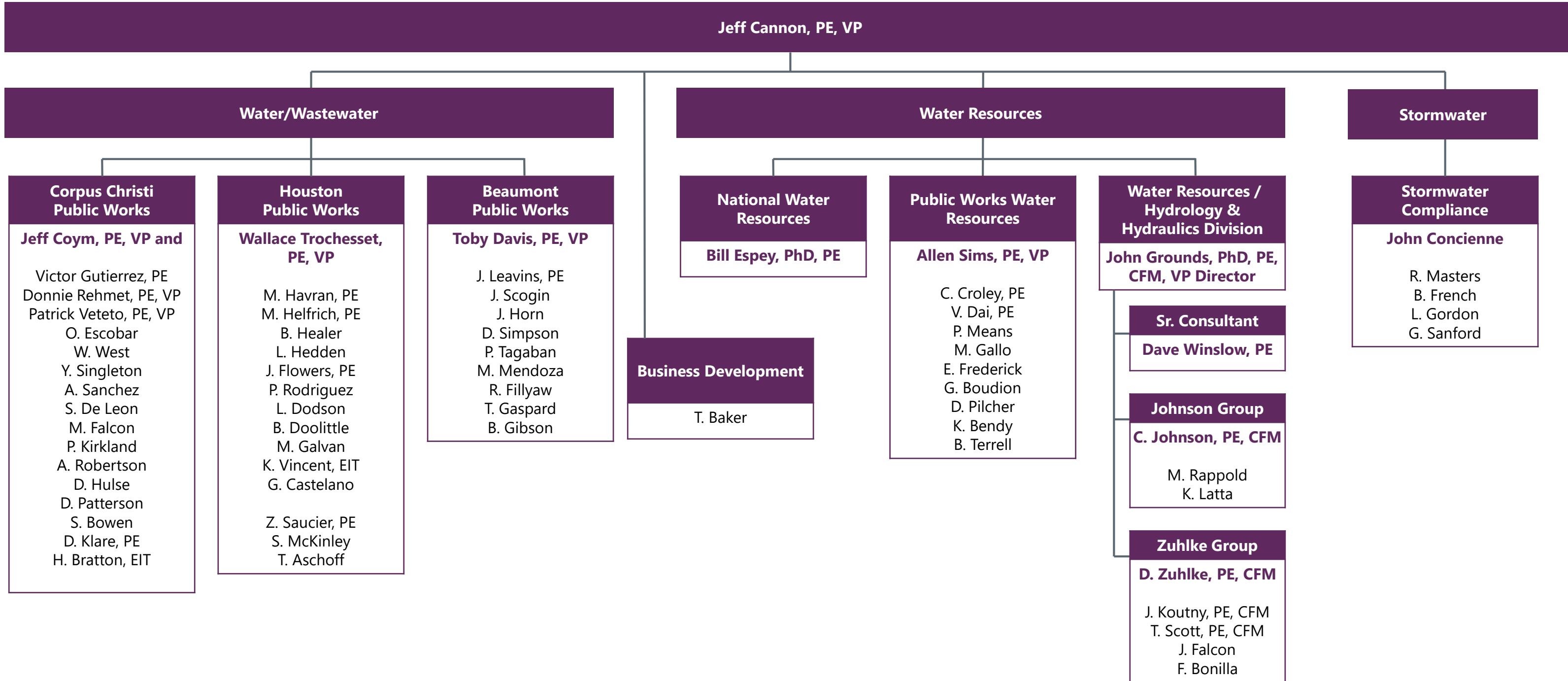
Transportation
David Baylor

Land Development
Carol Bellinger

Oil and Gas
Rapher Perez-Lopez

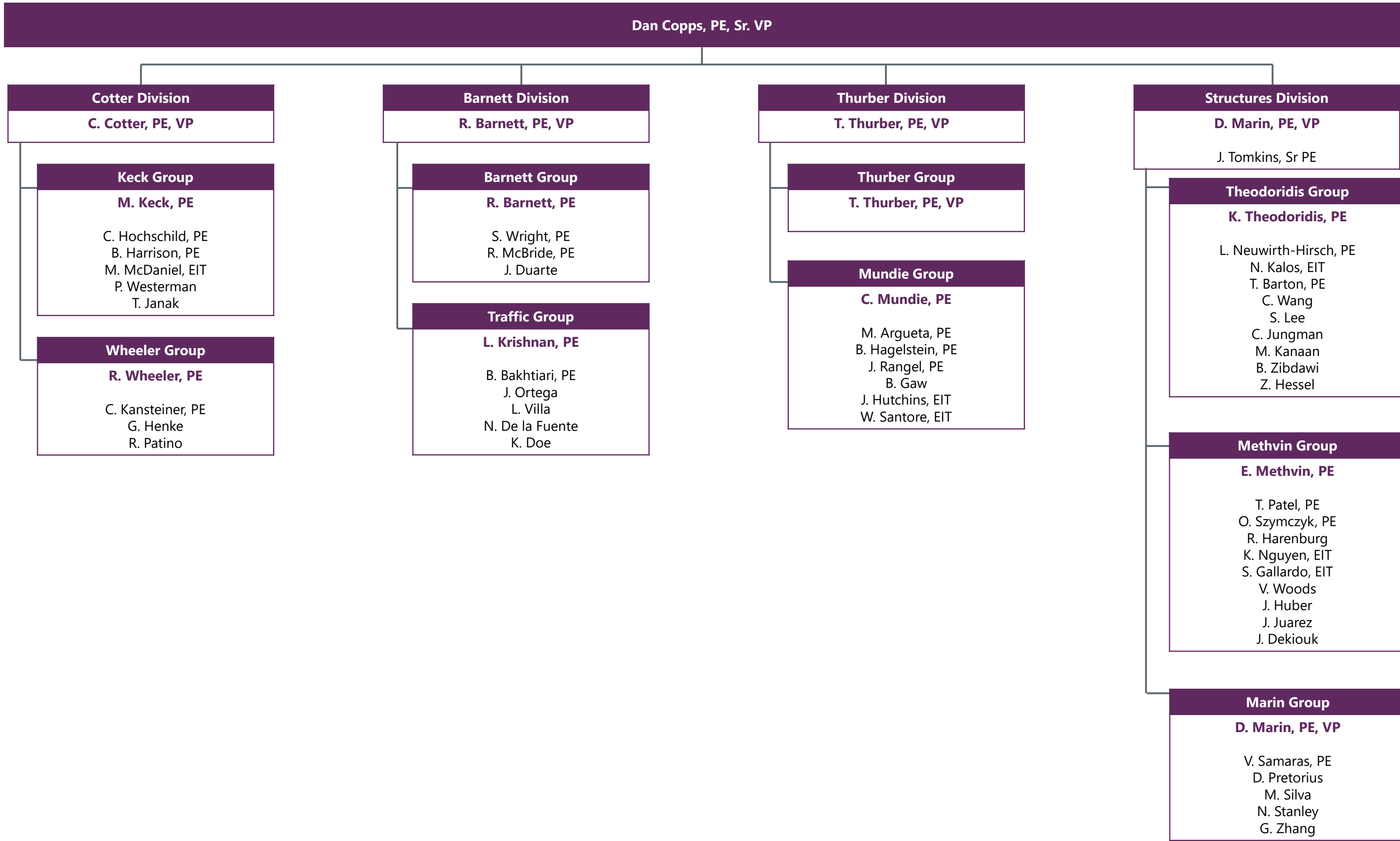


PUBLIC WORKS STAFF ORGANIZATION





TRANSPORTATION





ENERGY SERVICES STAFF ORGANIZATION

Robert Hickman, PE

Administrative Assistant

S. Pate

Project Engineering

Jeff Brown, PE

K. Keaton, EIT
J. Gutierrez, EIT
D. Cravy
E. Worthy
J. Uptegrove
M. Johnson
J. Shaver, PE
F. Medrano, EIT
A. Witmer
A. Dean
B. Phillips
H. Agee
M. Hanna
T. Brisco
B. Lovett
A. Zak
N. Khan, PE
J. Bair, PE
S. Breen

Business Development

Michelle McElya

D. Courville
A. Boneau
T. Garmon
M. Simeon
S. Aucoin

Coastal Engineering

Bill Worsham, PE

V. Jones, EIT
D. Dusini, PE

Civil/Structural Engineering

Robert Hickman, PE, Director

H. Reynolds, PE
R. Warrick, PE
D. Howell, PE
B. Zhang, PE
C. Womack, PE
J. Gibson
J. McClelland
J. Doolittle, EIT
T. Smith
J. Stedman
K. Johnson, EIT

Electrical Engineering

Frank Dillard, PE

B. Gentz, PE
J. Garza
R. Sanford
N. Soza
P. Largaespada
C. Standridge
K. Burke, EIT
E. Garza
A. Cabassa
A. Wright
O. Castillo
E. Garza
R. Wilson



RAIL SERVICES STAFF ORGANIZATION

Mike R. Baker, PE, Rail Services Director

LJA Builds
Mike Baker
J. Lund
J. Hamilton

LJA Infrastructure
Mike Baker
R. Hughes
R. Wirh
D. Swank
H. Sekula

Rail Services and Business Development
David Harris

Admin Support
N. Ridings

Admin Support
S. Mashburn

BNSF
Mike Mize

Short Lines
Patrick DeMarais

East Coast
Mike Bell
M. Wilson
B. Elias

Pipe and Wire
David Elder

CM
Duane Bohannon

Design-Private
Ben Jenschke

CSX-OSPPE
Vic Arceneaux

PTRA and Private
Brian Roybal
C. Rubly
T. Crist
S. Sanga

BNSF Design/CM
Barry Gondron

CM
Mike Shockley
M. Salazar
J. Shikle
J. Payne

BNSF Design
Gene Bowles
K. Dennis
A. Espinoza
D. Salazar
J. Brown
B. Soto



Susan Alford, REM

Berg Oliver Associates, Inc.

Susan Alford, REM

- K. Morgan
- D. Zarzana
- S. Mathis
- J. Dunn
- B. Price
- T. Biccs
- C. Thayer
- S. Ross
- A. Brook
- W. Proctor
- D. Sherrill
- A. Mathis
- M. Baker
- D. Sauder
- D. Hardy
- K. Wood
- J. Mathis
- J. Gardner
- M. Graham

Horizon Environmental Services

C. Lee Sherrod, PWS

- S. Dorsey
- S. Flesher
- R. Brownlow
- J. Owens
- E. Foster
- J. Killian
- G. Sherrod
- R. O'Leary
- A. Hand
- E. Foster
- T. Dunbar
- E. Schroeder
- C. Bludau
- B. Smith
- J. Lyons
- J. Wiersema
- B. Miller
- A. Hines
- S. Brigham-McLellan
- C. Ellis
- A. Schautteet
- M. Froese
- K. Goles
- A. Goldstein



LJA SURVEYING STAFF ORGANIZATION

