



# LJA STAFF ORGANIZATION

**President**  
James D. Ross, PE

**Executive Assistant**  
S. Martinka

**Corporate**  
Carl Shaw  
*Executive VP*

**Land Development**  
James D. Ross, PE  
*President*

**Public Infrastructure**  
Jeff P. Collins, PE, PMP  
*Executive VP*

**Energy Services**  
Robert Hickman, PE  
*Senior VP*

**Rail Services**  
Mike R. Baker, PE  
*President*

**Environmental**  
Susan Alford, REM  
*President*

**Surveying**  
Jeremy Russell, RPLS  
*President*

**CFO**  
John Penewitt, CPA

**Accounting**

- A. Richards, CPA
- A. Mathis
- C. Shaw
- M. Fleming
- B. Joseph
- J. Harper
- J. Raughter
- J. Vasquez
- M. Megley
- J. Salas
- D. Hoppestad
- E. Tendilla
- R. Green
- T. Jozwiak
- J. Calix de Berrios
- M. Ferguson
- E. Robles
- M. Boeske
- A. Carter
- T. Holloway
- J. Flores
- A. Bundick
- J. Keith
- C. Hinojosa
- K. Israelian
- Y. Ilyakhunova
- J. Ladig
- S. Cunningham

**Legal**  
C. Shaw  
S. McDowell  
S. Ladner  
L. Karlina

**Human Resources**

- Irene Gaddis, SPHR
- D. Masterson
- J. Jordan
- M. DiClemente
- S. Hernandez
- D. Allevato
- M. March

**Marketing**

- Kristin Kautz, CPSM
- M. Lucio
- A. Baeza
- L. Grubbs
- C. Brand
- S. Tighe
- C. Fields
- S. Shaw
- P. Finol
- T. Meysembourg
- T. Do
- S. Henson
- J. Ruiz
- E. Cannon
- T. Jacobson

**Senior Consultant**  
John Shackett

R. McSwain

**IT**

- Ryan Harper
- D. Kimball
- J. Gonzales
- T. Deleon
- M. Pacheco
- H. Diep
- P. Covell
- Z. Cole
- A. Reichert
- E. Arias
- C. Kuecker
- E. Halydier
- J. Khordaji
- W. Iniguez
- K. Payton

**Reception**

- C. Grubbs

**Facilities & Real Estate**  
Brittany Anderson

**Repro/Scanning**

Raul Yerena

- G. Gurrola
- G. Mays
- C. Garcia
- D. Laxson
- M. Montalvan
- S. Shikle

**Admin Support/Filing**

- M. Mensik
- M. Montalvan
- J. Shillings
- S. Shikle
- E. Robles
- S. McDowell
- J. Conley
- W. Nolasco
- Y. Salgado
- M. Batiz
- T. Hilliard
- A. Dollar

**HSE**

- B. Spratt
- A. McElya

Houston Land Development

North Texas Development

Central Texas Land Development

GIS Group

Transportation

Public Works

Construction Services

Central Texas Public Infrastructure Division

Project Engineering

Business Development

Coastal Engineering

Civil/Structural Engineering

Electrical Engineering

Houston

Jacksonville

Berg Oliver Associates, Inc.

Horizon Environmental Services

Lake Jackson Office

North Texas Office

Houston Office

Deer Park Office

Beaumont Office

Austin Office

Corpus Christi Office

Midland Office

Precision Aerial Compliance Solutions (PACS)



# HOUSTON LAND DEVELOPMENT STAFF ORGANIZATION

Alan McKee, PE, Sr. VP

**Administrative Coordinator**

E. McAllister

**Kelly Division**

**J. Kelly, PE, VP**

- L. Gan, PE
- O. Huerta, PE
- J. Minter, PE
- J. Aviles, EIT
- N. Hollek, EIT
- J. Carline, EIT
- A. Apresa
- J. Ariza
- E. Deao, PE
- K. Franco, EIT
- A. Lentini
- C. Gilchrist
- A. Garcia

**LeBlanc Group**

**C. LeBlanc, PE**

- A. Casey, EIT
- A. McGovern, EIT
- K. Stagner, PE
- C. Smith
- L. Green

**H&H Division**

**J. Grounds, PhD, PE**  
**B. Bardin, PE**

- J. Gutierrez-Barraza, PE
- A. Castillo, EIT
- M. Rice, EIT
- P. Mbewe, PE
- D. Crowell, PE
- S. Williams, PE
- L. Guan, PE
- V. Kass
- M. Reiner
- W. Patrick, EIT
- E. Lam, EIT
- Z. Shah

**Ehler Division**

**W. Ehler, PE, VP**

**Swanson Group**

**M. Swanson, PE**

- K. Mudd, PE
- K. Kraus, EIT
- S. Harvey, EIT
- T. Veillon
- J. Zevallos
- B. Sutton
- M. Castillo
- M. Buchanan

**West Houston Platting Group**

**R. Rodriguez**

- G. Dewey
- A. Socarras
- N. McAnninch
- Z. Zarse
- M. Garcia
- S. McCoy

**McKee Division**

**A. McKee, PE, Sr. VP**

- R. Arnold
- A. Francis
- K. Moreno

**Discovery/Project Feasibility Group**

J. Moy

**GIS Group**

**G. Culver**

- R. Lyde
- B. Copeland
- B. Grimm
- M. Palacios
- M. Holmes
- V. Urquhart
- A. Balkin
- C. Arredondo
- N. Huynh
- A. Edmonds
- C. Kehrer
- M. Genzer
- T. Black

**Reed Division**

**D. Reed, PE, VP**

**Salazar Group**

**V. Salazar, PE**

- Z. Hill, EIT
- M. Kreikemeier, PE
- M. Bowles
- E. Garcia
- J. Pineda
- G. Singh
- S. Guio
- J. Henry
- T. Stehling

**Woodlands Planning Group**

**J. Wendt, AIA**

- S. Phy
- G. Howell
- R. Easton
- E. Moriarty

**Bowles Group**

**R. Bowles, PE**

- S. Perez, PE
- C. De Los Santos, EIT
- P. Gonzalez
- J. Vasquez
- J. Graham, PE
- J. Perez, EIT
- A. Godinez
- D. Salazar
- T. Nguyen

**Planning/Landscape Architecture Group**

**J. Phillips, ASLA**

- M. Stoops, PLA
- C. Patout ASLA
- J. Clark, PLA, LEED®AP
- D. Salley
- V. Esparza
- K. Harris
- A. Farray
- T. Davilmar
- C. Gonzalez
- M. Springer
- B. Yang
- E. Alfaro
- S. Hewitt

**Mensik Division**

**G. Mensik, PE, Sr. VP**

**Admin Asst.**

S. Abulhassan

**QA / QC**

- P. Vega
- S. Byrd
- T. Koenig, EIT
- J. Mauricio
- D. Gibbons
- T. Lockett
- L. Hernandez
- L. O'Brien
- C. Baker
- J. Fuentes

**Mensik Group**

**G. Mensik, PE, Sr. VP**

- C. Vinklerek, PE
- C. Weishuhn, PE
- E. Rohne, EIT
- E. Wheeler
- A. Bowman, PE
- M. Fuentes
- C. Ruiz

**Site Development**

**G. Patch, PE, VP**

**Steve Hobbs, PE, VP**

- J. Schrader, PE
- C. Tang, PE
- C. Argo, PE
- M. Darwish, PE
- A. Kalos
- T. Shelmire
- J. Gomez
- K. Hall-Long
- G. Bostan Ali
- H. Durlam
- N. Yeary
- A. Chesser
- E. Smith
- F. Parma, EIT
- J. Ortiz
- S. Theriot-Smith, PE
- N. Tyczkowski

**Field Reps**

- H. Lynch
- G. Felan
- D. VanCleaf
- R. Hudson
- M. Barber
- J. Campos
- M. Einkauf
- M. Johnson
- C. Mancillas
- K. McCoy
- N. Parr
- R. Trevino
- A. Pinckert
- J. Jenkins
- M. Rios

**Tinney Division**

**D. Tinney, PE, LEED®AP, VP**

- R. Smith, PE
- P. Newton, PE
- B. Edwards, PE
- J. Navas
- A. Barbier, PE
- A. Todsen, PE
- J. Gonzalez, PE
- C. Schatz
- C. Schatz
- H. James, EIT
- O. Mireles
- C. Caraway, PE
- A. Sanchez
- S. Helvey, PE
- J. Strickland
- A. Abbas
- B. Elhakim

**Katy Platting Group**

- G. Freeman
- M. Escue
- L. Chapa
- J. Price

**Construction Group**

**C. Villarreal, PE**

**Contract Administration**

**S. Ross, CSI, CCA**

- L. Martinez
- P. Chatterjee
- A. Carothers
- C. Durham
- S. Hearne
- E. Murphy
- A. Otto

**Water/Waste water Group**

**G. Haan, PE**

- M. Gillentine, PE
- A. Broughton, PE
- E. Gonzalez, EIT
- E. Silva
- J. Johnson
- M. Cullar, PE
- S. Velez, EIT
- M. Sierra, PE
- S. Gallardo

**Brown Division**

**J. Brown, PE, Sr. VP**

**Escobar Group**

**N. Escobar, PE, VP**

- A. Carriage, PE, CFM, VP
- S. Boyd, PE
- S. Frankovich, PE
- J. Kuzelka
- S. Torres
- C. Ariza
- A. Rueda, PE
- K. Ventura, EIT
- R. Stanfield, EIT
- J. Ramirez, EIT
- S. Stevens
- J. Ehler
- J. Galvez
- D. Rangel
- M. Kalinowski, EIT
- C. Fabian, PE
- R. Serna

**Rivera Group**

**D. Rivera, PE, VP**

- M. Trevino, EIT
- G. Bostan Ali, EIT
- G. Harp
- S. Mendoza
- W. Hennigan

**Kalkomey Group**

**C. Kalkomey, PE**

- J. Minter, PE
- A. Huynh

**Admins**

- D. Landers
- P. Gauden
- A. Begazo
- B. Tucker
- J. Binford
- S. Bruner

**Project Coord.**

A. Francis

**Rusk Division**

**M. Rusk, PE, VP**

**Rusk Group**

**M. Rusk, PE, VP**

- J. Sandoval
- K. Kinchen, PE
- S. Gonzalez
- A. Gallegos

**Rucker Group**

**E. Rucker, PE, VP**

- J. Pickens, PE
- R. Booth, PE
- H. Nguyen
- C. Eiche
- H. Rice, EIT
- J. Brooks
- T. Krevosky

**Gay Group**

**M. Gay, PE**

- J. Pottharst, EIT
- C. Krus
- L. Faccuseh
- J. Sullivan



# CENTRAL TEXAS LAND DEVELOPMENT STAFF ORGANIZATION

John Clark, PE, Sr. VP

## Austin Division

J. Clark, PE, Sr. VP

## Austin Group

D. Miller, PE, VP  
D. Ryan, PE, VP  
B. Faltsek, PE  
R. Hurley, PE  
M. Provaznik, PE  
L. Crone, PE  
H. Reimer, PE  
C. Hager  
J. Carter  
C. Stedman  
T. Sykes  
J. Reyes  
J. Samerigo  
S. Crandon  
L. Worsham  
J. Kutac  
E. Petersen  
J. Rollins  
K. Quick, EIT  
R. Medina  
C. Herrera  
R. Kotera  
W. Welch  
J. Millan, Sr PE  
E. Resendez, EIT  
Q. Wattinger, EIT

## Westlake Group

W. Hoysa, PE  
D. Hoppestad  
J. Midura, PE  
J. Camarillo  
P. Poel  
J. Bradford  
N. Anderson  
V. Edwards  
J. Piecuch  
M. Lowden  
S. Curtis, EIT  
S. Echeverria  
R. Bentley  
A. Kinsella  
E. Lopez  
W. Caller  
R. Poplaswki  
M. Debs  
J. Garza  
B. Yau, EIT  
A. Benitez  
J. Madding, PE

## Westlake Division

J. Longaro, PE, Sr. VP  
Administrative Coordinator  
E. Wong

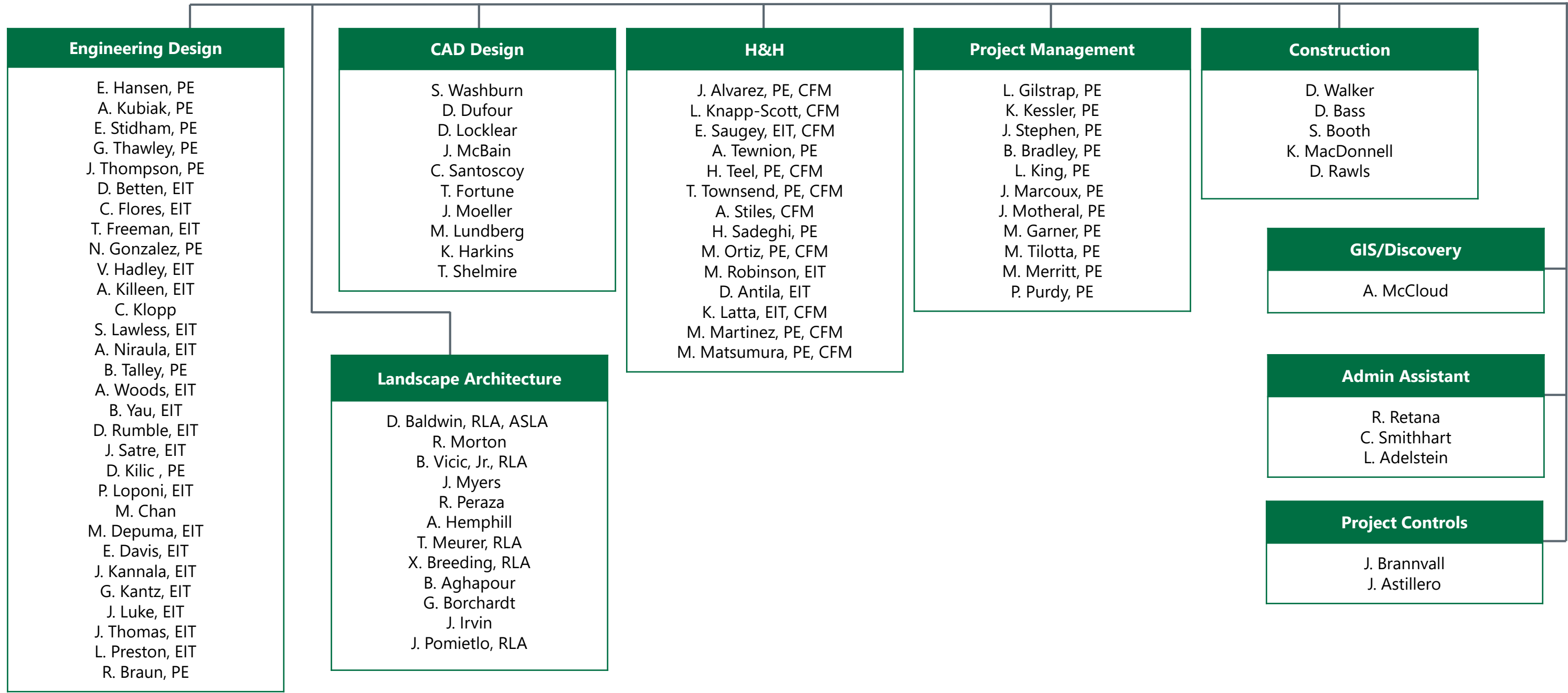
## San Antonio Division

B. Baggs, VP-PE  
B. Boentges, PE  
J. McMillan  
J. Moore, EIT  
J. Flores  
J. Duran  
M. Perez  
M. Santos  
N. Chamberlain, PE  
N. Bremser, PE  
P. Rodriguez  
P. Flores, PE  
P. Martinez  
S. McFarland, EIT  
T. Hurt, PE  
J. Gawlik, PE



# NORTH TEXAS LAND DEVELOPMENT

Jim Wiegert, PE, Sr. VP / Kyle Salzman, PE, VP





# PUBLIC INFRASTRUCTURE STAFF ORGANIZATION

Jeff P. Collins, PE, PMP, Executive VP

**Administrative Coordinator**

R. Puente

**Transportation Division**

Dan Copps, PE, Sr. VP

**Construction Services**

R. Kronenberger, PE  
L. Gamboa, PE  
A. Lujan, PE  
C. Brook  
E. Arzia  
J. Arriaga  
K. Mackan, EIT  
B. Wilson  
R. Seals  
W. Wilson  
S. Eathalapaka  
A. Karr  
M. Fisher  
A. Estrada  
J. Herrera  
M. Fisher  
R. Davis  
A. Miller  
M. Fisher  
R. Barton  
L. Wilson  
L. Pierce  
D. Maxedon  
D. Olson  
G. Rater  
M. Silva  
S. Scarfone  
N. Dreasher

**Central Texas Public Infrastructure Division**

Ken Schrock, PE, Sr. VP

**QA/QC**

D. Garrett, PE  
C. Moczygamba  
J. Tietz

**Public Works**

J. Boyle  
C. Larkin

**Transportation**

K. Schrock, PE

**Schrock Group**

K. Schrock, PE, Sr. VP

Z. Ryan, PE, CFM  
D. Bohls, PE, CFM  
R. Sladek, PE  
M. DeLaCruz  
K. Rogers  
M. Hernandez  
A. Quezada  
M. Hourani  
J. Pine  
D. Fuller  
S. Bond  
C. Wood, Sr. PM, PE  
A. Mozdbar, Sr. PM, PE  
S. Thomas  
J. Mitchell  
M. Azzo  
V. Heye  
R. Erazo  
J. Teran  
J. Yanez  
R. Guerra, PE  
S. Trampetti

**Young Group**

B. Young, PE

P. Ternes, EIT	B. Ratcliff, EIT
A. McCarthy	R. Miller
S. Adams, EIT	B. Kilgore
P. Nevejas	R. Salinas
R. San Miguel	L. Veldanez
R. Muenster	B. Gurley
M. Dauenhauer	M. Gurley
J. Schrock	B. Lawhon
J. Esparza	J. Taylor
J. Graves	E. Hernandez
G. Perez	A. Garcia
T. Newland	D. Drake

**Public Works Division**

Jeff Cannon, PE, Sr. VP

**Right of Way and Real Estate Services**

**Transportation**

D. Baylor  
A. Handy  
K. Pulver

**Land Development**

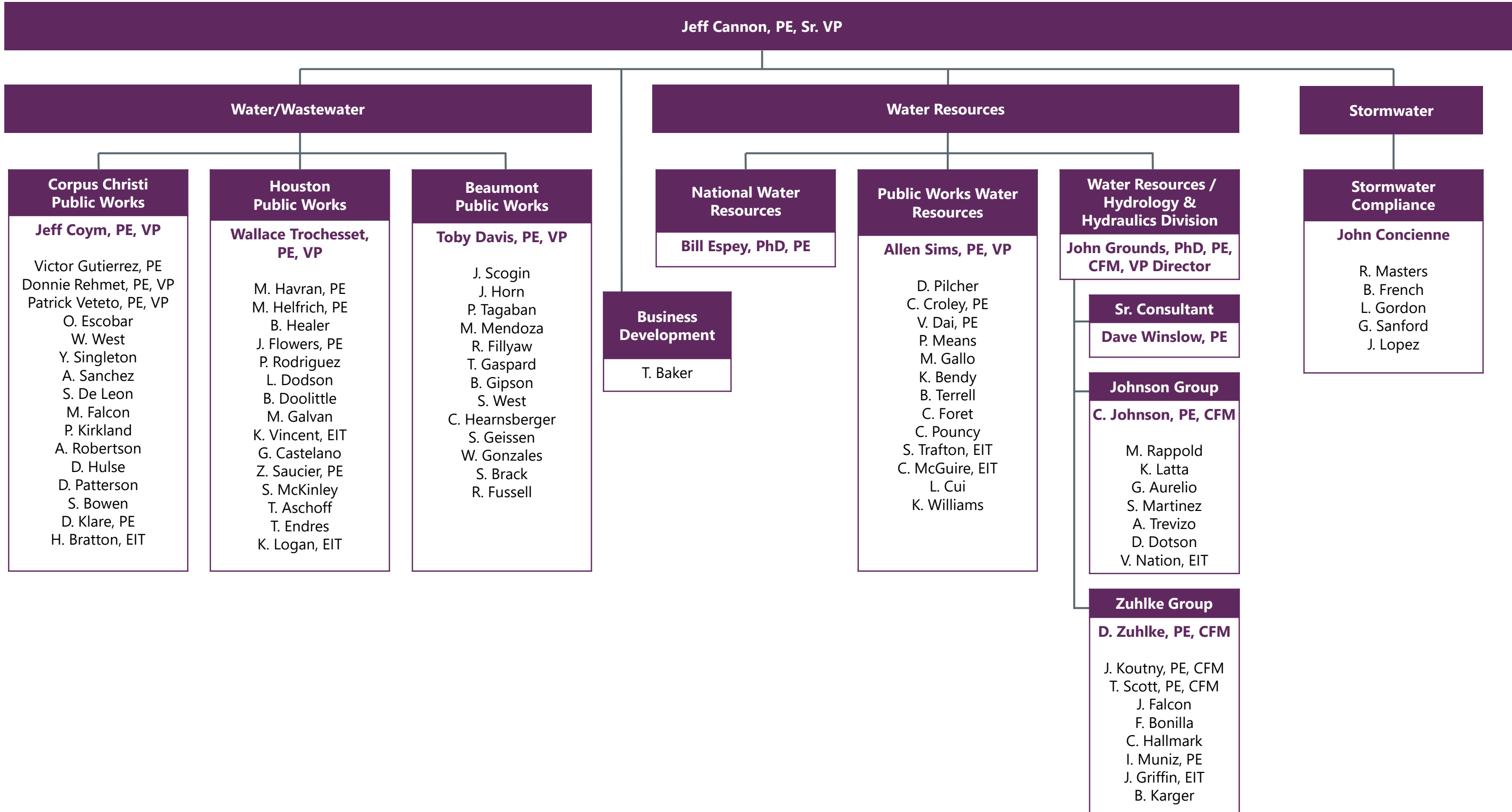
C. Bellinger  
L. Perez Juarbe  
J. Perez  
R. Bricout  
N. Kuechle  
D. Jensen  
K. Ritchie  
L. Holiman  
M. Catherine Francis  
R. Roman  
K. Herrera  
M. Anderson

**Oil and Gas**

R. Perez-Lopez  
A. Hopkins



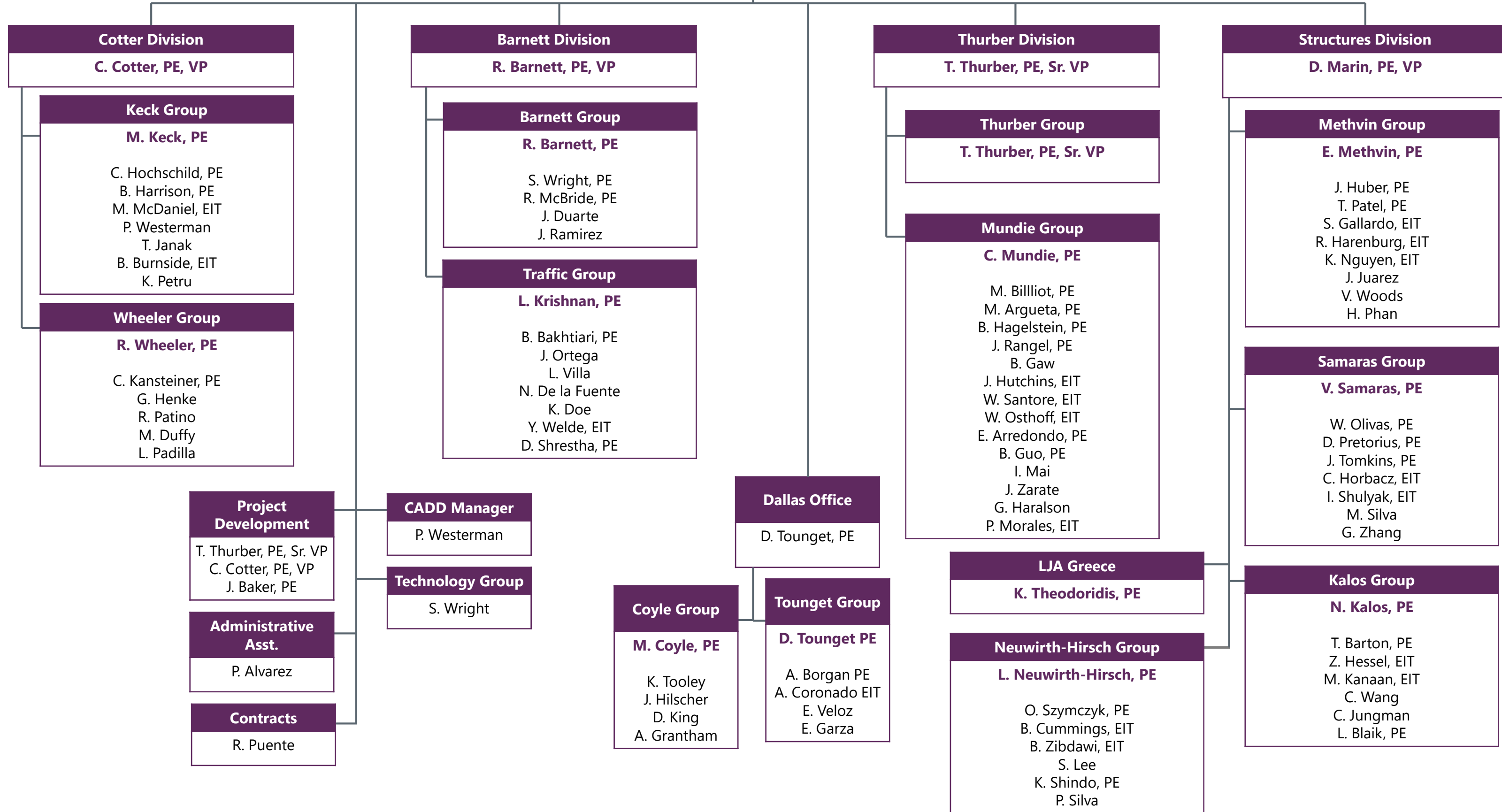
# PUBLIC WORKS STAFF ORGANIZATION





# TRANSPORTATION

Dan Copps, PE, Sr. VP





# ENERGY SERVICES STAFF ORGANIZATION

Robert Hickman, PE

Administrative Assistant

S. Pate

## Project Engineering

**Jeff Brown, PE**

K. Keaton, EIT  
J. Gutierrez, EIT  
D. Cravy  
E. Worthy  
J. Uptegrove  
M. Johnson  
J. Shaver, PE  
F. Medrano, EIT  
A. Witmer  
A. Dean  
B. Phillips  
H. Agee  
T. Brisco  
B. Lovett  
A. Zak  
N. Khan, PE  
S. Breen  
W. Hafer  
H. Wedding  
J. Dean  
B. Hardinbrook  
E. Powell  
M. Perrien

## Business Development

**Michelle McElya**

D. Courville  
A. Boneau  
T. Garmon  
M. Simeon  
S. Aucoin

## Coastal Engineering

**Bill Worsham, PE**

V. Jones, EIT  
D. Dusini, PE  
P. Ravella

## Civil/Structural Engineering

**Robert Hickman, PE, Director**

H. Reynolds, PE  
R. Warrick, PE  
D. Howell, PE  
B. Zhang, PE  
C. Womack, PE  
J. Gibson  
J. McClelland  
J. Doolittle, EIT  
T. Smith  
J. Stedman  
K. Johnson, EIT  
M. Jeswani  
C. Barnett  
J. Tipton  
A. Sahdev, PE

## Electrical Engineering

**Frank Dillard, PE**

J. Garza  
R. Sanford  
N. Soza  
P. Largaespada  
C. Standridge  
K. Burke, EIT  
E. Garza  
A. Cabassa  
A. Wright  
O. Castillo  
E. Garza  
D. Coleman, PE  
S. Young  
S. Cryer





# RAIL SERVICES STAFF ORGANIZATION

Mike R. Baker, PE, Rail Services Director

**LJA Builds**  
**Mike Baker**  
J. Lund  
J. Hamilton  
B. Maida

**LJA Infrastructure**  
**Mike Baker**  
R. Hughes  
R. Wirh  
D. Swank  
H. Sekula  
J. Alford

**Rail Services and Business Development**  
**David Harris**

**Admin Support**  
N. Ridings

**Admin Support**  
S. Mashburn

**BNSF**  
**Mike Mize**

**Short Lines**  
**Patrick DeMarais**

**East Coast**  
**Mike Bell**  
M. Wilson  
B. Elias

**Pipe and Wire**  
**David Elder**

**CM**  
**Duane Bohannon**

**Design-Private**  
**Ben Jenschke**

**CSX-OSPRE**  
**Vic Arceneaux**

**PTRA and Private**  
**Brian Roybal**  
C. Rubly  
T. Crist  
S. Sanga  
S. Sanga

**BNSF Design/CM**  
**Barry Gondron**

**CM**  
M. Salazar  
J. Shikle  
J. Payne

**BNSF Design**  
**Gene Bowles**  
K. Dennis  
A. Espinoza  
D. Salazar  
J. Brown  
B. Soto



# ENVIRONMENTAL STAFF ORGANIZATION

Susan Alford, REM

## Berg Oliver Associates, Inc.

Susan Alford, REM

K. Morgan  
D. Zarzana  
S. Mathis  
J. Dunn  
B. Price  
D. Schlitzkus  
T. Biccs  
C. Thayer  
S. Ross  
A. Brook  
W. Proctor  
D. Sherrill  
A. Mathis  
M. Baker  
D. Sauder  
D. Hardy  
K. Wood  
J. Mathis  
J. Gardner  
M. Graham  
R. San Miguel  
J. Sellers  
I. McBride  
X. Simmons

## Horizon Environmental Services

Russ Brownlow, President

Jesse Owens, Vice President

### Ecology

S. Flesher  
C. Lee Sherrod  
G. Sherrod  
J. Killian  
S. Rainwater  
D. Hagyari  
J. Pittman  
T. Dunbar  
J. Yarbrough

### Cultural Resources

J. Owens  
D. Kapanday Barrera  
E. Foster  
K. St. Clair  
J. Wiersema  
C. Bludau  
J. Dalton  
J. Lyons  
M. Froese  
J. Kenmore  
C. Michael  
J. Brownlow

### Support/Administration/Marketing

A. Hand  
B. Miller  
C. Ellis  
R. O'Leary  
K. Schulz  
E. Thompson



# LJA SURVEYING STAFF ORGANIZATION

Jeremy Russell, RPLS - President

## Project Development

Jeffrey Hieber, VP

## Survey Technology

M. Doring, CST II

### Midland Office

C. McAdams, PE, RPLS

J. Beard, CST III  
D. Merino  
V. Valdez  
E. Sparks

#### Crews

P. Graesser  
R. Kellogg  
B. Lowery

### Lake Jackson Office

Chuck Jurica, RPLS

K. Barros Carames  
P. Damian  
J. Damian

#### Crews

R. Damian

### Beaumont Office

Wesley K. Maxey, RPLS

E. Duckworth, RPLS  
A. Kaley, PLS  
Ma. Grissom, SIT  
Mi. Grisson, CSTI  
T. Melvin, SIT  
R. Morris, SIT  
R. Cabrera  
Z. Johnson

#### Crews

N. Means, Chief of Crews

K. Bundick  
B. Williams, CSTI  
D. Cammack  
J. Cammack  
J. Pham  
C. Matthew  
M. Jones  
J. Eaves  
J. Grandin  
K. Rodriguez  
J. Savignano  
R. Rodriguez  
J. Garcia

### West Houston Office

Heather Sides, VP, RPLS, CFedS, PLS

K. Monroe, RPLS  
G. Nutter, RPLS  
L. Daly, RPLS  
A. Ferguson, RPLS  
C. Lowe, RPLS  
G. Donelan, SIT  
B. Lowe, SIT  
G. Svenman, CST  
B. Holt, CST IV  
C. Weishuhn, SIT  
W. Gardner  
J. Misher  
C. Wills  
S. Machinsky  
G. Lewandowski, SIT

#### Crews

Darryl Davis, Chief

J. Guidry  
V. Trejo  
E. Neyhart, CST III  
B. Keller  
G. Keller  
R. Hewitt  
K. Sides  
R. Berley  
J. Rush  
S. Irahim  
J. Beck  
B. Keeler  
A. Comp  
J. Lange  
R. Hernandez  
C. Kinsey

### Corpus Christi Office

Albert Franco, PE, RPLS

D. Nesbitt, RPLS  
D. Ramirez  
S. Canales

#### Crews

P. Nebling  
R. Guerra  
P. Olivarez  
J. Smith

### Austin Office

Dustin Trousil, VP, RPLS

C. Castellow  
J. Cooper  
E. Coelho  
A. Langlois  
G. Ntumngia

#### Crews

M. Overall, PLS, Chief of Crews

M. Gibbs  
R. Guerra  
T. Anderson

### Deer Park Office

Scot Lowe, RPLS

C. Berkenmeier  
S. Scott  
A. Ostertag

#### Crews

A. Ostertag, Chief of Crews

D. Bianchi  
M. Carpenter  
T. Hamilton  
W. White  
B. Allen  
J. Dunlap  
R. Schubert

#### Transportation

G. Anderson, RPLS  
J. Kowis, RPLS  
P. Morales, SIT

### North Texas Offices

Mike Baitup, RPLS, PLS

C. Matteo, RPLS  
S. Owens  
B. Youngblood  
M. Miglietti  
M. Riley  
S. Damian  
A. Brown  
J. Gentry  
S. Smith  
S. Thuemmel

#### Crews

M. Miglietti, Chief of Crews

A. Mancera  
E. Lopez, Jr.  
R. Santamaria, Jr.  
J. Gonzalez Labrada  
S. Acosta  
B. Black  
A. Retana  
S. Garcia  
J. Flores  
J. Coulter  
J. Lopez  
A. Arciniega  
C. Woods  
R. White  
C. Perez

### Precision Aerial

Scott McGowan, President

J. Nicholas, DOA  
R. Taillon, DOO  
T. Pipoly  
C. Stalford  
J. Baker  
M. Levitski