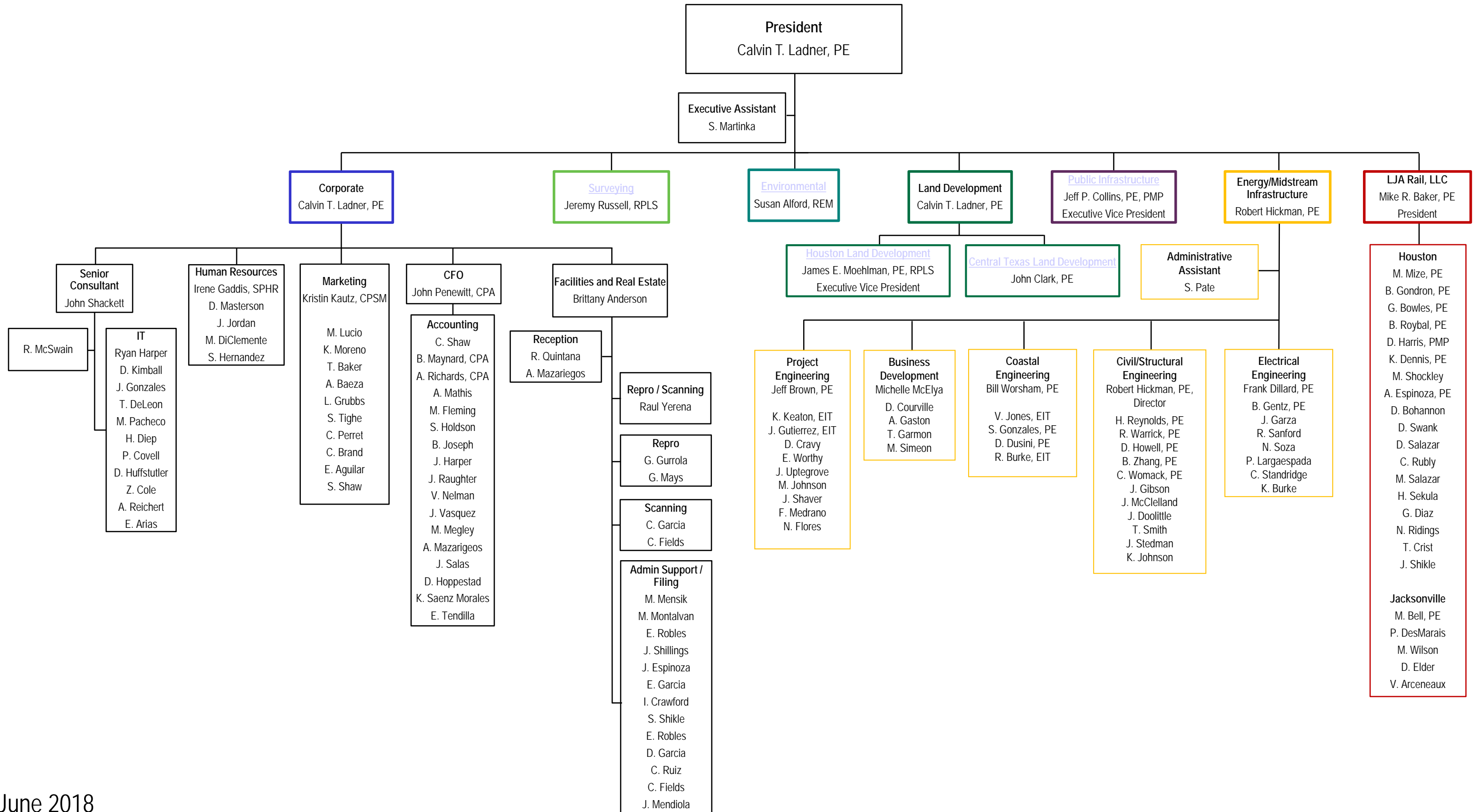
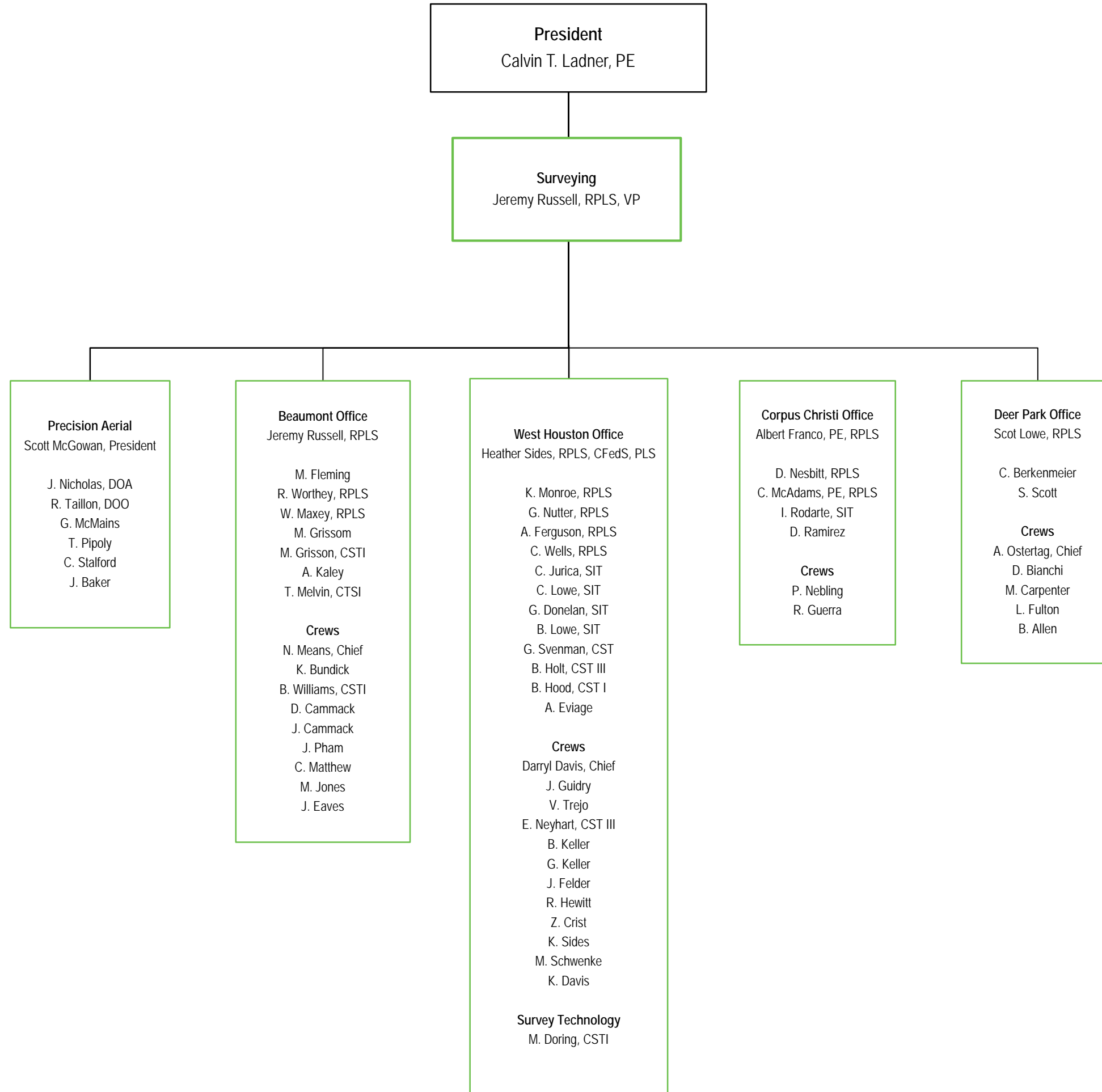




LJA Staff Organization

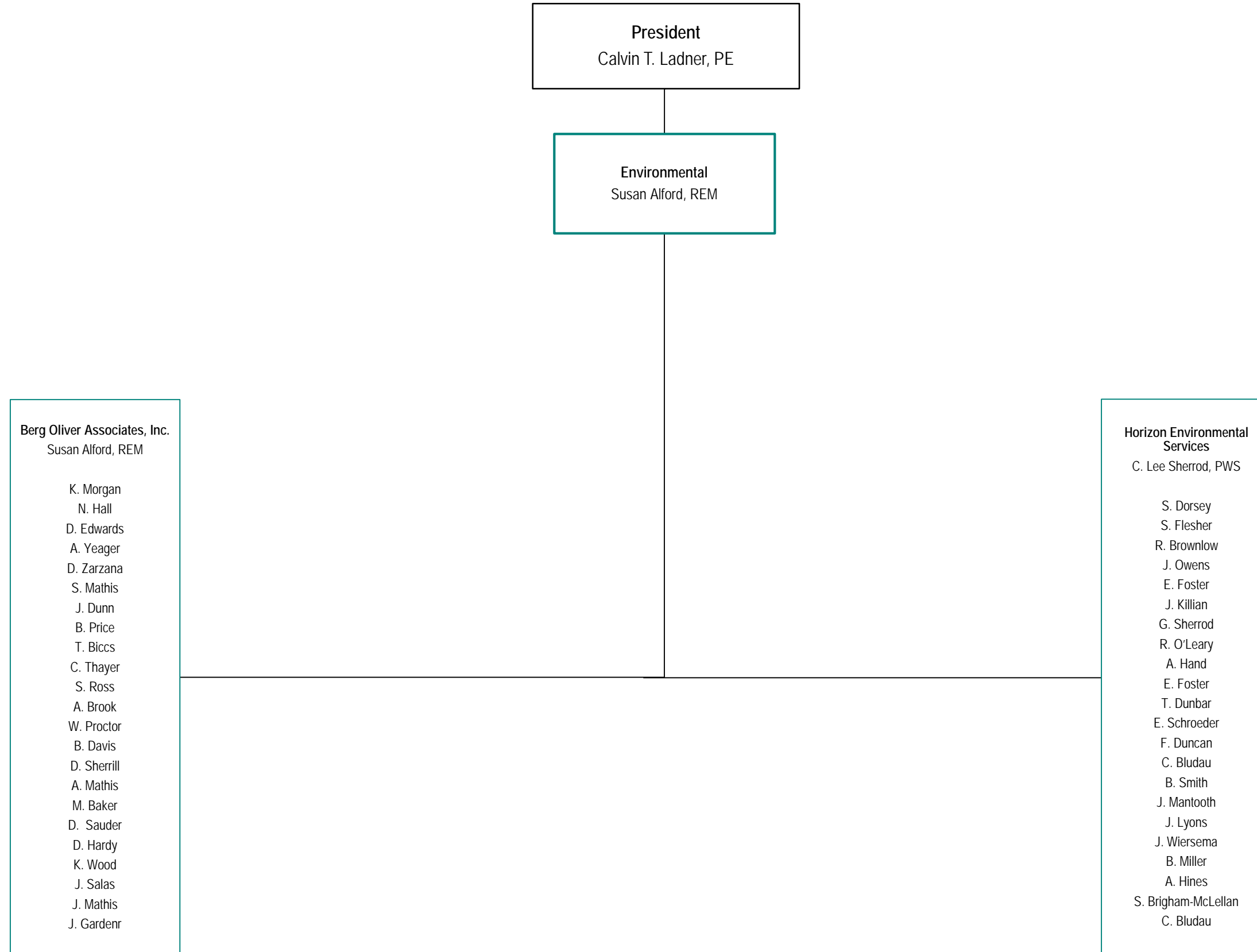


Surveying Staff Organization





Environmental Staff Organization





Houston Land Development Staff Organization

June 2018

President
Calvin T. Ladner, PE

Houston Land Development
James Moehlman, PE, RPLS, Exec. VP

Administrative Coordinator
R. Arnold

Moehlman Division
James Moehlman, PE, RPLS, Exec. VP

Sr. Consultant
John Perry

McKee Division
Alan McKee, PE, VP
J. Alvarez, EIT

Mensik Division
Gary Mensik, PE, Sr. VP

Patch Division
Gregory Patch, PE, VP

Tinney Division
David Tinney, PE, LEED®AP, VP

Graham Division
Jerrold Graham, Jr., PE, Sr. VP

Ross Division
James Ross, PE, VP
E. Wiley

Ehler Division
William Ehler, PE, VP

Kelly Division
Jason Kelly, PE, VP

Water/Wastewater Group
Gregg Haan, PE
M. Gillentine, PE
A. Broughton, EIT
C. Cromer
S. Dixon
M. Moriarty, PE
E. Gonzalez

Discovery / Project Feasibility Group
J. Moy

Administrative Asst.
L. Brown

Mensik Group
M. Wang, PE
C. Vinklerek, PE
C. Weishuhn, EIT
J. Graham, EIT
A. Bowman, EIT
M. Darwish, EIT
E. Rohne, EIT
L. Olivares-Ramirez
M. Fuentes
C. Ruiz

QA / QC
P. Vega
S. Griffith
J. Mauricio
D. Gibbons
K. Crooks

Reed Division
Donnie Reed, PE, VP

Salazar Group
V. Salazar, PE

V. Mundie, PE
Z. Hill, EIT
M. Kreikemeier, EIT
C. Parra
M. Bowles

Bowles Group
R. Bowles, PE

S. Perez, PE
C. De Los Santos, EIT
P. Gonzalez
J. Vasquez
S. Tran
G. Singh

M. Nezami, PE
D. O'Dell
J. Gomez
S. Xu
G. Bostan Ali
S. Hobbs
A. Kalos
D. Malone
N. Yearly
T. Shelmire
J. Schrader

J. Moy
R. Smith, PE
B. Edwards, PE
A. Barbier, PE
S. Rivers, PE
A. Todsén, EIT
J. Gonzalez, EIT
J. Navas
C. Schatz
C. Schatz
H. James

Brown Division
James Brown, PE, VP

Escobar Group
N. Escobar, PE

A. Carriage, PE, CFM
S. Frankovich, EIT
W. Bruns, PE
J. Kuzelka
S. Torres
G. Gonzalez
C. Ariza
A. Rueda, EIT
V. Chavez
K. Ventura

Rivera Group
D. Rivera, PE

P. Smith, PE
K. Hoffman, PE
L. Faccuseh
C. Krus
J. Galvez
M. Buchanan
G. Harp
A. Demessie
W. Bruns, PE, PM
S. Mendoza
C. Tang
M. Trevino

Administrative Coordinator
D. Landers

Administrative Asst.
P. Gauden
A. Begazo

Project Coordinator
A. Francis

Rusk Division
Michael Rusk, PE, VP

Rusk Group
M. Rusk, PE
S. Brovaron, EIT
K. Kinchen, EIT
S. Gonzalez

Rucker Group
Eddie Rucker, PE

J. Pickens, PE
R. Booth, PE
H. Nguyen
C. Eiche

Gay Group
M. Gay, PE
M. George, EIT
J. Pasquarelli, EIT
J. Weber
J. Pottharst, EIT

Planning / Platting

Construction Group
Curtis Villarreal, PE

Planning / Landscape Architecture Group
John Phillips, ASLA
C. Patout ASLA
J. Harvey, ASLA
J. Clark, PLA, LEED®AP
D. Salley
V. Esparza
L. Kidwell
L. Xia

West Houston Platting Group
Rene Rodriguez
G. Dewey
A. Fuller
S. McCoy
J. Price
N. Ferrington

Woodlands Planning Group
Jim Wendt, AIA

S. Phyl
G. Howell
R. Easton
E. Moriarty

Katy Platting Group
Geoff Freeman
M. Garcia
V. Piedra
J. Sandoval
M. Escue

CAG Coordinator
Suzanne Ross
L. Martinez
P. Chatterjee
A. Zumaya
B. Alvarez
A. Carothers
C. Durham
L. Murray

Field Rep Group
H. Lynch
M. Parr
G. Felan
C. Cargill
D. VanCleaf
J. Blunt
R. Hudson
M. Barber
J. Campos
M. Einkauf
M. Johnson
C. Mancillas
K. McCoy
N. Parr

Baumgartner Group
T. Baumgartner, PE

A. Campbell, PE
A. Casey, EIT
P. Rodriguez
A. McGovern
C. Gilchrest

Boyd Group
S. Boyd, PE

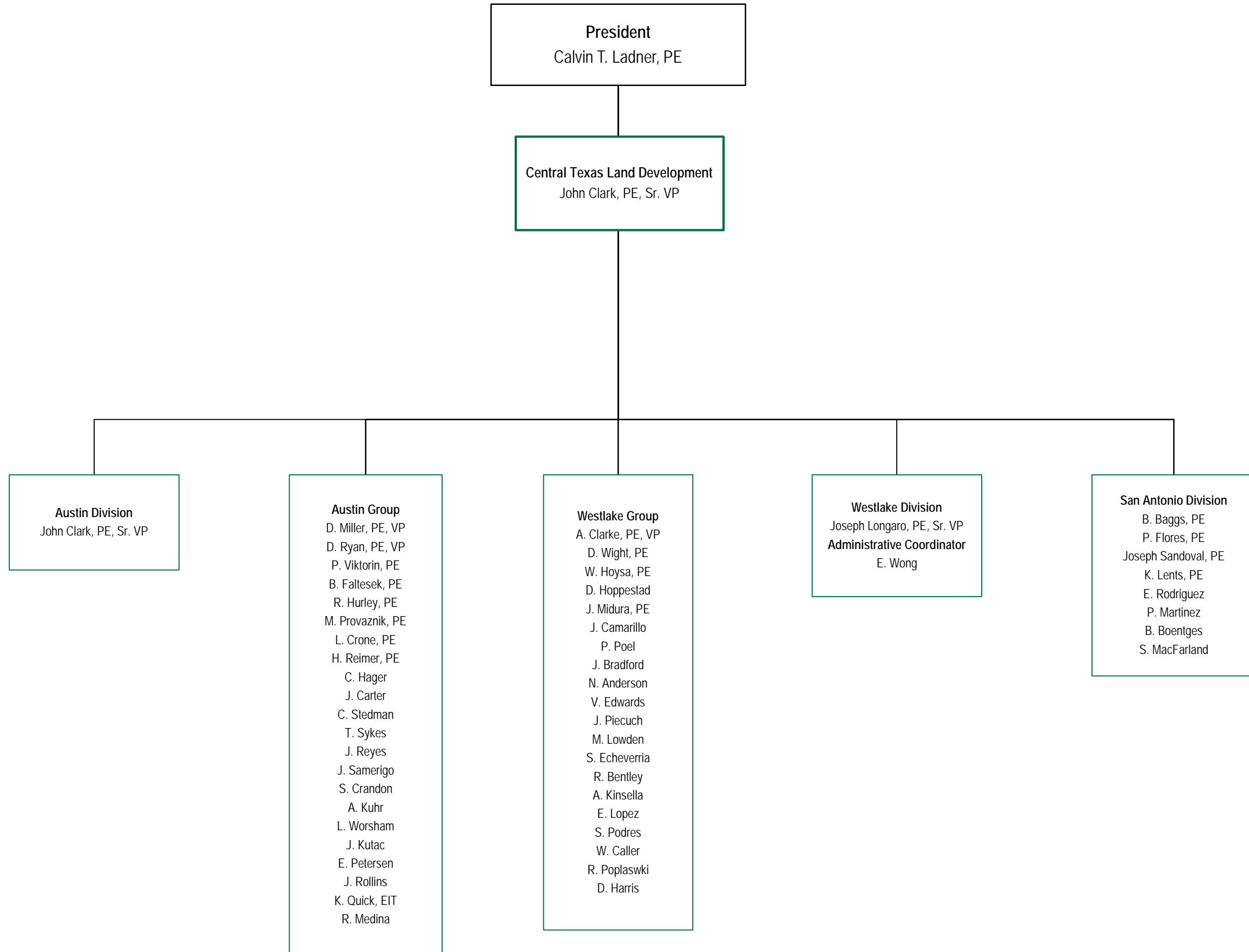
E. Deao, PE
C. Gilchrest
T. Stehling

H&H Division
John Grounds, PhD, PE

Bob Bardin, PE, CFM
P. Olson
A. Castillo, EIT
L. Gan, PE
J. Barraza, PE
M. Rice, EIT

A. Batiz, PE, CFM
D. Crowell, PE, CFM
S. Williams, EIT
D. Overstreet, PE, CFM
P. Mbewe, PE, CFM
C. Kalkomey, PE, CFM







Public Infrastructure Staff Organization

President
Calvin T. Ladner, PE

Public Infrastructure
Jeff P. Collins, PE, PMP
Executive Vice President

Administrative Coordinator
R. Puente

