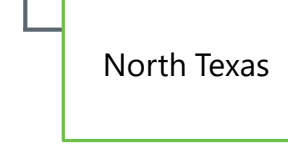
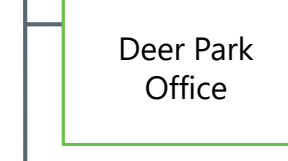
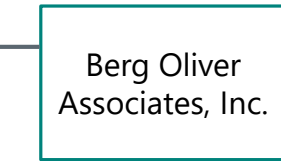
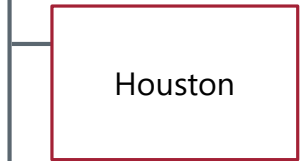
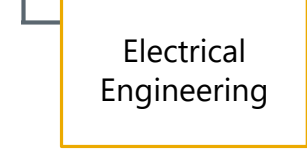
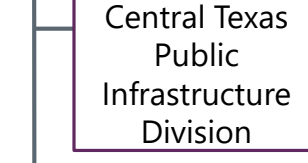
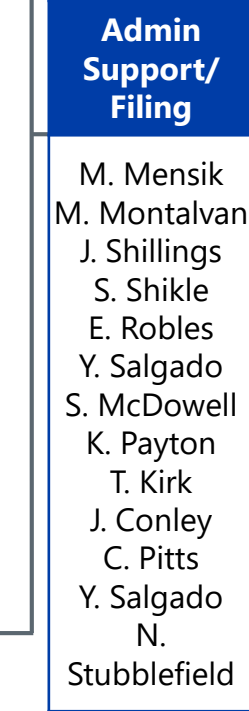
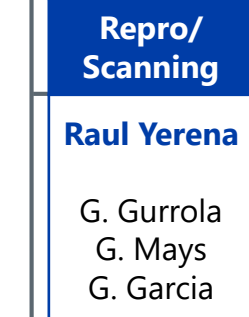
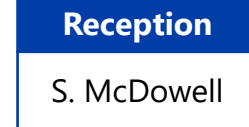
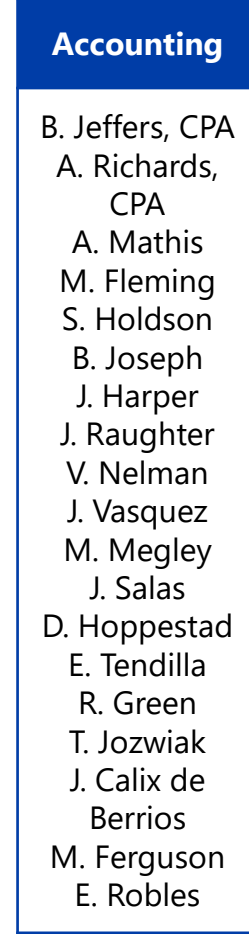
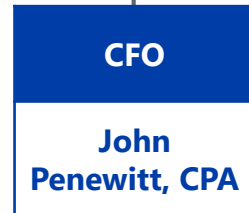
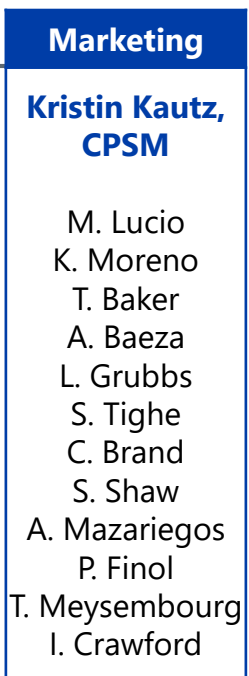
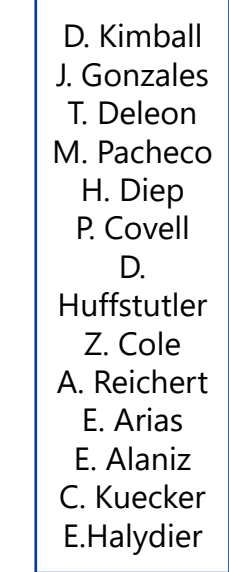
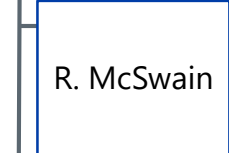
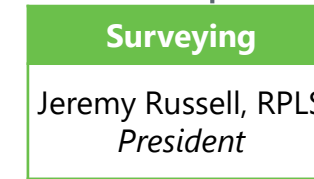
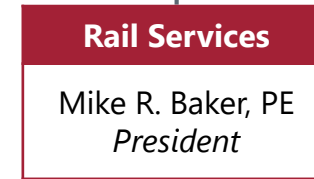
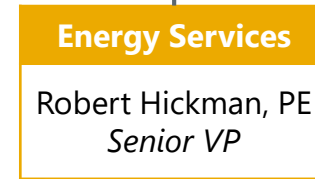
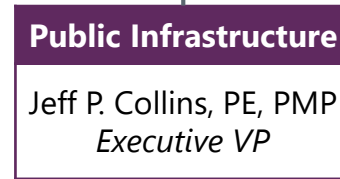
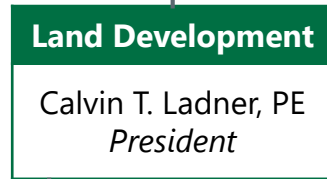
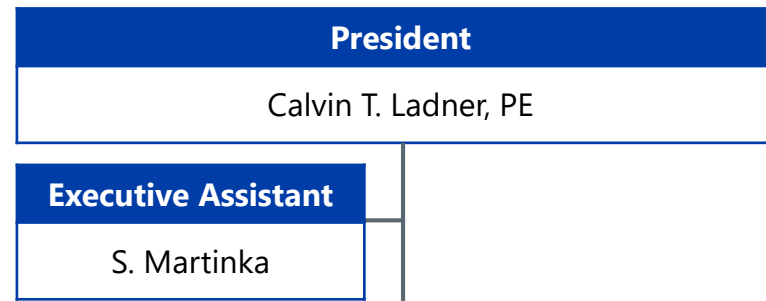




LJA STAFF ORGANIZATION





HOUSTON LAND DEVELOPMENT STAFF ORGANIZATION

James Ross, PE, Sr. VP

Administrative Coordinator

E. McAllister

Ross Division

James Ross, PE, Sr. VP

Sr. Consultant

John Perry

McKee Division

Alan McKee, PE, Sr. VP

Rebecca Arnold
A. Francis
C. Fields

Mensik Division

Gary Mensik, PE, Sr. VP

Admin Asst.

QA / QC
P. Vega
S. Byrd
T. Koenig, EIT
S. Griffith
J. Mauricio
D. Gibbons

Reed Division
Donnie Reed, PE, VP

Patch Division

Gregory Patch, PE, VP

J. Gomez
S. Xu
G. Bostan Ali
S. Hobbs, PE, VP
A. Kalos
N. Yeary
T. Shelmire
J. Schrader, PE
K. Hall-Long
C. Tang, PE
H. Durlam
M. Darwish, PE
A. Chesser

Tinney Division

David Tinney, PE, LEED® AP, VP

R. Smith, PE
B. Edwards, PE
A. Barbier, PE
S. Rivers, PE
A. Todsen, PE
J. Gonzalez, PE
J. Navas
C. Schatz
C. Schatz
H. James, EIT
O. Mireles
P. Newton, PE
A. Sanchez
S. Helvey, PE
T. Haechten, EIT
P. Purdy, PE

Brown Division

James Brown, PE, Sr. VP

Kelly Division

Jason Kelly, PE, VP

O. Huerta, PE
J. Minter, PE
J. Perez, EIT
T. Harrison, EIT
J. Aviles, EIT
N. Hollek, EIT
J. Carline, EIT
A. Apresa
J. Ariza

LeBlanc Group

C. LeBlanc, PE

E. Deao, PE
A. Casey, EIT
K. Franco, EIT
A. McGovern, EIT
D. Salazar, EIT
P. Gonzalez
T. Stehling
C. Gilchrist

Water/Waste water Group

Gregg Haan, PE

M. Gillentine, PE
A. Broughton, PE
E. Gonzalez, EIT
S. Dixon

Ehler Division

William Ehler, PE, VP

Swanson Group

M. Swanson, PE

K. Mudd, PE
K. Kraus, EIT
S. Harvey, EIT
F. Aleman, EIT
T. Veillon
J. Zevallos

H&H Division

John Grounds, PhD, PE

Bob Bardin, PE,
L. Gan, PE
J. Gutierrez-Barraza, PE
A. Castillo, EIT
M. Rice, EIT

C. Kalkomey, PE

P. Mbewe, PE
D. Overstreet, PE
D. Crowell, PE
S. Williams, PE
P. Olson

Planning / Platting

Planning / Landscape Architecture Group

John Phillips, ASLA

C. Patout ASLA
J. Harvey, ASLA
J. Clark, PLA, LEED® AP
D. Salley
V. Esparza
L. Kidwell
M. Stoops
K. Goodrich
A. Farray

Katy Platting Group

M. Escue
L. Chapa
A. Garcia
M. Garcia
J. Sandoval

West Houston Platting Group

Rene Rodriguez

G. Dewey
A. Fuller
J. Price
A. Socarras
N. McAnninch
A. Demessie

Woodlands Planning Group

Jim Wendt, AIA

S. Phy
G. Howell
R. Easton
E. Moriarty

GIS Group

George Culver

R. Lyde
B. Copeland
B. Grimm
M. Palacios
M. Holmes

Discovery / Project Feasibility Group

J. Moy

Mensik Group

C. Vinklerek, PE
C. Weishuhn, PE
S. Curtis, EIT
E. Rohne, EIT
F. Taylor

Wang Group

Michael Wang, PE

A. Bowman, PE
K. Trachsel, EIT
M. Fuentes
C. Ruiz

Salazar Group

V. Salazar, PE

V. Mundie, PE
Z. Hill, EIT
M. Krekemeier, PE
M. Bowles
E. Garcia
J. Pineda
G. Singh
S. Guio

Bowles Group

R. Bowles, PE

S. Perez, PE
C. De Los Santos, EIT
P. Gonzalez
J. Vasquez
S. Tran
J. Graham, PE
J. Perez, EIT

Construction Group

Curtis Villarreal, PE

CAG Coordinator

Suzanne Ross

L. Martinez
P. Chatterjee
A. Carothers
C. Durham
S. Hearne
C. Senior

Field Reps

H. Lynch
M. Parr
G. Felan
C. Cargill
D. VanCleaf
J. Blunt
R. Hudson
M. Barber
J. Campos
M. Einkauf
M. Johnson
C. Mancillas
K. McCoy
N. Parr

Escobar Group

N. Escobar, PE

A. Carriage, PE, CFM
S. Boyd, PE
S. Frankovich, PE
J. Kuzelka
S. Torres
C. Ariza
A. Rueda, PE
V. Chavez
K. Ventura, EIT
R. Stanfield, EIT
S. Griffith
J. Ramirez, EIT
S. Stevens
J. Ehler
J. Galvez
D. Rangel

Rivera Group

D. Rivera, PE

M. Trevino, EIT
G. Bostan Ali, EIT
G. Harp
S. Mendoza
M. Boone

Admins

D. Landers
P. Gauden
A. Begazo
B. Tucker

Project Coord.

A. Francis

Rusk Division

Michael Rusk, PE, VP

Rusk Group

M. Rusk, PE
J. Sandoval
K. Kinchen, EIT
S. Gonzalez

Rucker Group

Eddie Rucker, PE

J. Pickens, PE
R. Booth, PE
H. Nguyen
C. Eiche
C. Trejo
H. Rice, EIT

Gay Group

M. Gay, PE

K. Hoffman, PE
J. Pottharst, EIT
C. Krus
L. Faccuseh



CENTRAL TEXAS LAND DEVELOPMENT STAFF ORGANIZATION

John Clark, PE, Sr. VP

Austin Division

John Clark, PE, Sr. VP

Austin Group

D. Miller, PE, VP
D. Ryan, PE, VP
P. Viktorin, PE
B. Faltsek, PE
R. Hurley, PE
M. Provaznik, PE
L. Crone, PE
H. Reimer, PE
C. Hager
J. Carter
C. Stedman
T. Sykes
J. Reyes
J. Samerigo
S. Crandon
A. Kuhr
L. Worsham
J. Kutac
E. Petersen
J. Rollins
K. Quick, EIT
R. Medina
C. Herrera
R. Kotera

Westlake Group

D. Wight, PE
W. Hoysa, PE
D. Hoppestad
J. Midura, PE
J. Camarillo
P. Poel
J. Bradford
N. Anderson
V. Edwards
J. Piecuch
M. Lowden
S. Echeverria
R. Bentley
A. Kinsella
E. Lopez
W. Caller
R. Poplaswki
D. Harris
M. Debs
J. Garza
Brighton Yau, EIT

Westlake Division

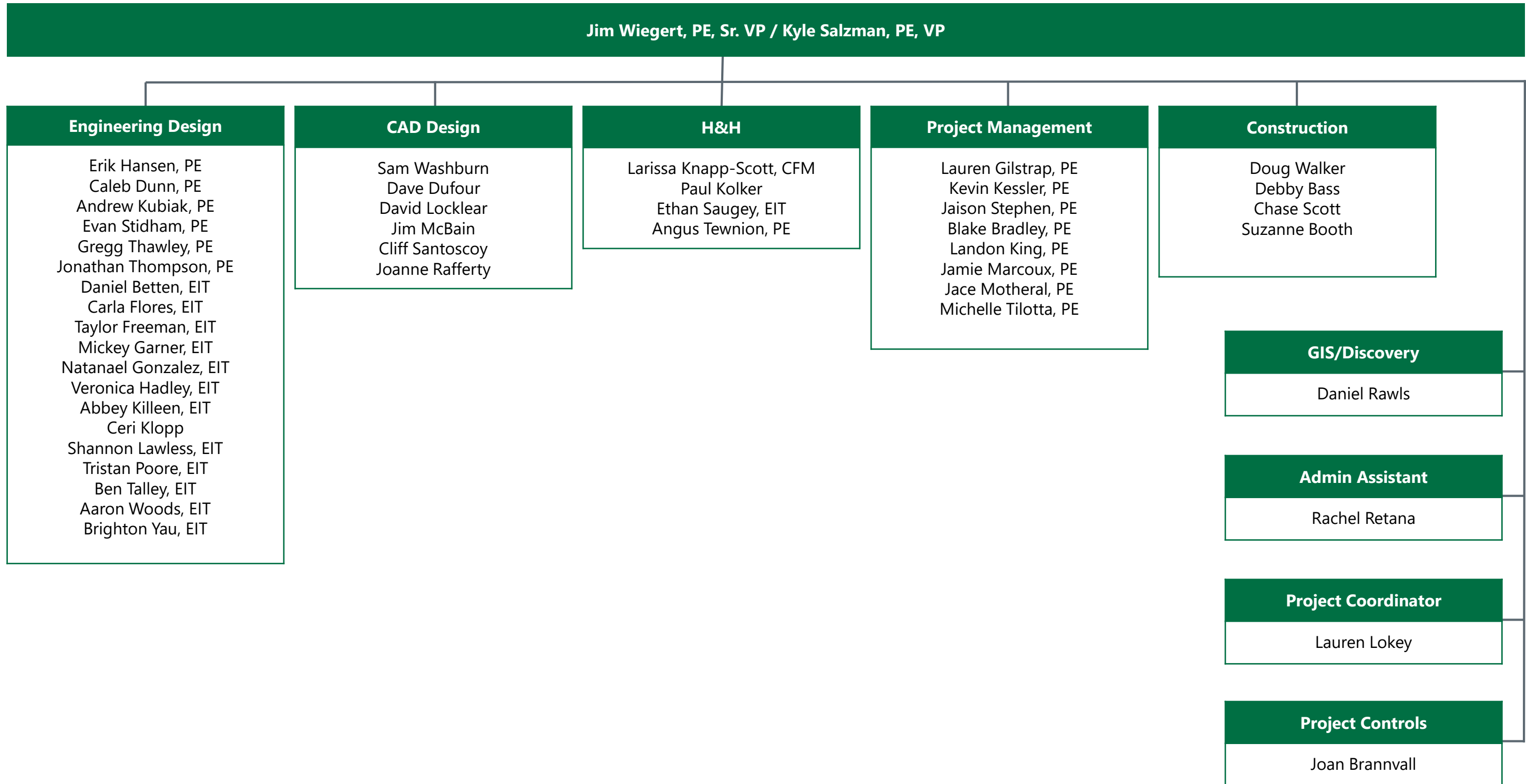
Joseph Longaro, PE, Sr. VP
Administrative Coordinator
E. Wong

San Antonio Division

B. Baggs, PE
P. Flores, PE
K. Lents, PE
E. Rodriguez
P. Martinez
B. Boentges
S. MacFarland
E. Garza
M. Santos



NORTH TEXAS LAND DEVELOPMENT





PUBLIC INFRASTRUCTURE STAFF ORGANIZATION

Jeff P. Collins, PE, PMP, Executive VP

Administrative Coordinator

R. Puente

Transportation Division

Dan Copps, PE, Sr. VP

Construction Services

R. Kronenberger, PE
L. Gamboa, PE
A. Lujan, PE
J. Salinas, PE
C. Brook
E. Arzia
J. Arriaga
K. Mackan, EIT
D. Lopez
B. Wilson
R. Seals
W. Wilson
S. Eathalapaka
V. Pena, PE

Central Texas Public Infrastructure Division

Ken Schrock, PE, VP

Public Works Division

Jeff Cannon, PE, VP

Project Development

Todd Thurber, PE, VP
Chris Cotter, PE, VP

Dallas Office

D. Tounget, PE

Administrative Asst.

Patty Alvarez

Tounget Group

D. Tounget PE

A. Borgan PE
A. Coronado EIT
E. Veloz
E. Garza
J. Santillan

Technology Group

Suzanne Wright

Contracts

Rebecca Puente

CADD Manager

Phillip Westerman

Coyle Group

M. Coyle, PE

K. Tooley
J. Hilscher

QA/QC

D. Garrett, PE
C. Moczygemba
J. Teets

Public Works

J. Boyle

Transportation

K. Schrock, PE

Schrock Group

K. Schrock, PE, VP

Z. Ryan, PE, CFM
S. Williams, PE
D. Bohls, PE, CFM
R. Sladek, PE
M. DeLaCruz
K. Rogers
M. Hernandez
A. Quezada
M. Hourani
J. Pine
D. Fuller
S. Bond

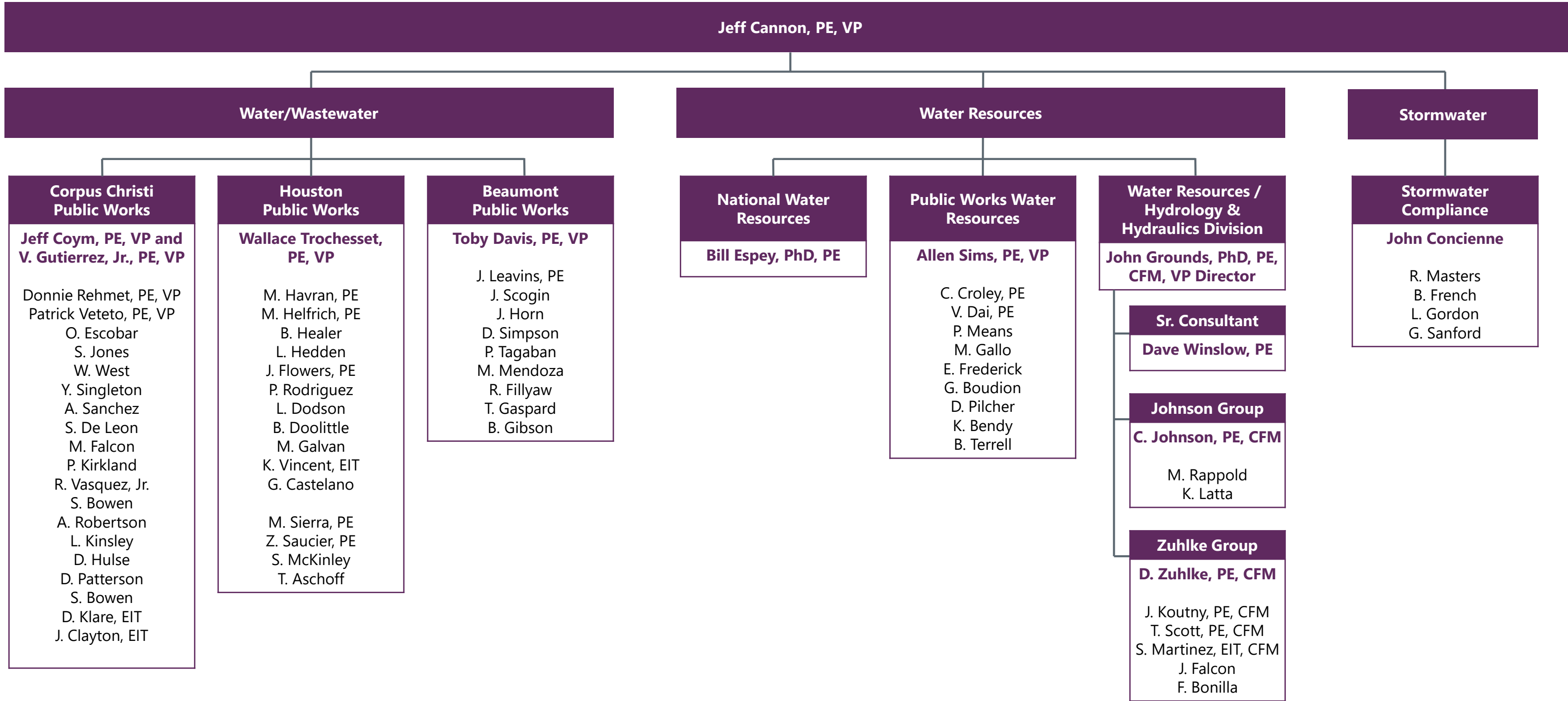
Young Group

B. Young, PE

P. Ternes, EIT
B. Ratcliff, EIT
A. McCarthy
R. Miller
S. Adams, EIT
J. Boyle
B. Kilgore
P. Nevejas
R. Salinas
R. San Miguel
L. Veldanez
R. Muenster
B. Gurley
M. Dauenhauer



PUBLIC WORKS STAFF ORGANIZATION



Jeff Cannon, PE, VP

Water/Wastewater

Corpus Christi Public Works

Jeff Coym, PE, VP and V. Gutierrez, Jr., PE, VP

Donnie Rehmet, PE, VP
Patrick Veteto, PE, VP
O. Escobar
S. Jones
W. West
Y. Singleton
A. Sanchez
S. De Leon
M. Falcon
P. Kirkland
R. Vasquez, Jr.
S. Bowen
A. Robertson
L. Kinsley
D. Hulse
D. Patterson
S. Bowen
D. Klare, EIT
J. Clayton, EIT

Houston Public Works

Wallace Trochesset, PE, VP

M. Havran, PE
M. Helfrich, PE
B. Healer
L. Hedden
J. Flowers, PE
P. Rodriguez
L. Dodson
B. Doolittle
M. Galvan
K. Vincent, EIT
G. Castelano
M. Sierra, PE
Z. Saucier, PE
S. McKinley
T. Aschoff

Beaumont Public Works

Toby Davis, PE, VP

J. Leavins, PE
J. Scogin
J. Horn
D. Simpson
P. Tagaban
M. Mendoza
R. Fillyaw
T. Gaspard
B. Gibson

Water Resources

National Water Resources

Bill Espey, PhD, PE

Public Works Water Resources

Allen Sims, PE, VP

C. Croley, PE
V. Dai, PE
P. Means
M. Gallo
E. Frederick
G. Boudion
D. Pilcher
K. Bendy
B. Terrell

Water Resources / Hydrology & Hydraulics Division

John Grounds, PhD, PE, CFM, VP Director

Sr. Consultant

Dave Winslow, PE

Johnson Group

C. Johnson, PE, CFM

M. Rappold
K. Latta

Zuhlke Group

D. Zuhlke, PE, CFM

J. Koutny, PE, CFM
T. Scott, PE, CFM
S. Martinez, EIT, CFM
J. Falcon
F. Bonilla

Stormwater

Stormwater Compliance

John Conciencie

R. Masters
B. French
L. Gordon
G. Sanford

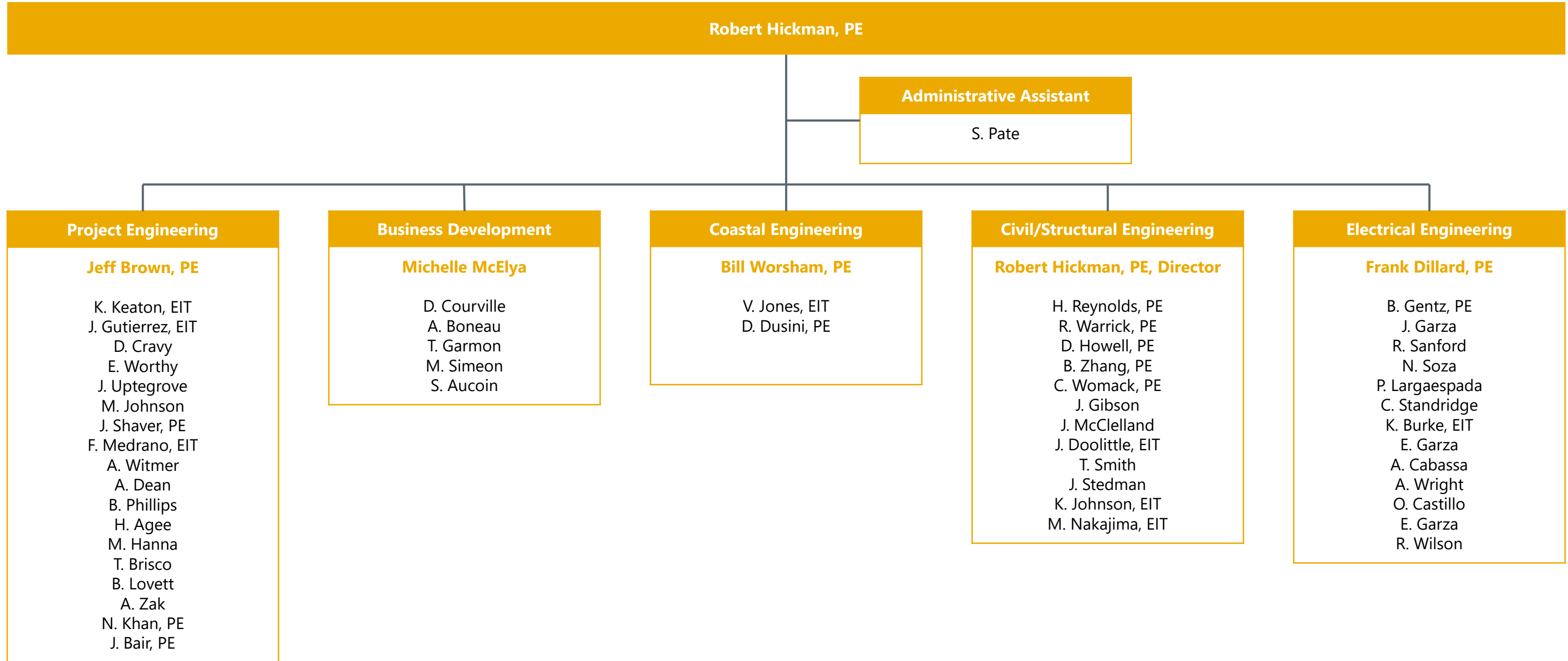


TRANSPORTATION



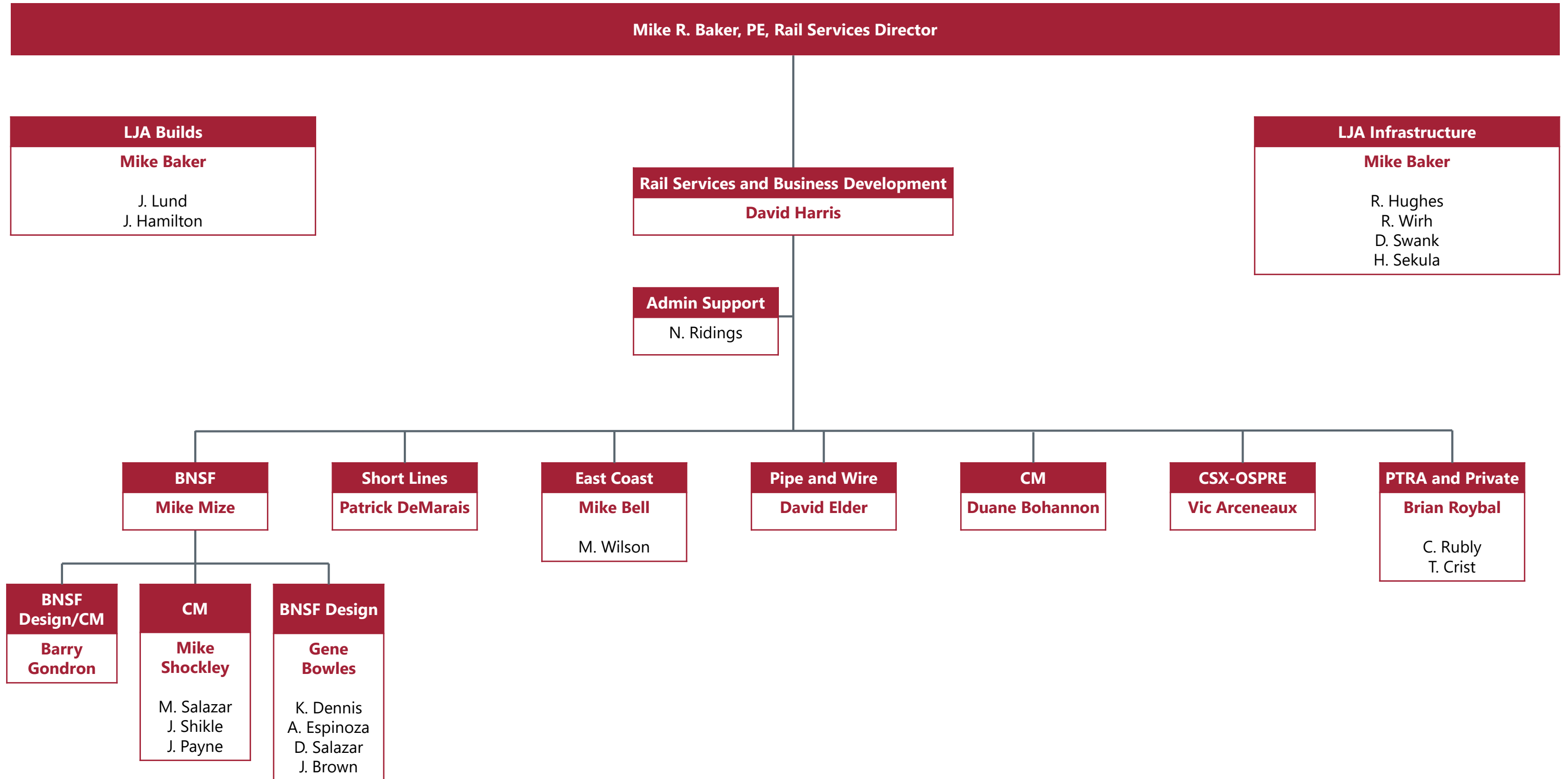


ENERGY SERVICES STAFF ORGANIZATION





RAIL SERVICES STAFF ORGANIZATION





ENVIRONMENTAL STAFF ORGANIZATION

Susan Alford, REM

Berg Oliver Associates, Inc.

Susan Alford, REM

K. Morgan
D. Zarzana
S. Mathis
J. Dunn
B. Price
T. Biccs
C. Thayer
S. Ross
A. Brook
W. Proctor
D. Sherrill
A. Mathis
M. Baker
D. Sauder
D. Hardy
K. Wood
J. Mathis
J. Gardner
M. Graham
L. Olivares-Ramirez

Horizon Environmental Services

C. Lee Sherrod, PWS

S. Dorsey
S. Flesher
R. Brownlow
J. Owens
E. Foster
J. Killian
G. Sherrod
R. O'Leary
A. Hand
E. Foster
T. Dunbar
E. Schroeder
F. Duncan
C. Bludau
B. Smith
J. Mantooth
J. Lyons
J. Wiersema
B. Miller
A. Hines
S. Brigham-McLellan
C. Ellis
A. Schautteet
M. Froese



LJA SURVEYING STAFF ORGANIZATION

